

PRODUCT RANGE
2025

DRUM & IBC
JACKETS
HEATERS
COVERS

DRUM HEATING JACKETS



A Drum heating jacket is the perfect solution when it comes to quickly and effectively heating up fluids and materials making them very easy to empty out with minimal to no waste product. They are also useful for protection from UV radiation.

The drum jackets are equipped with easy to use digital controllers, with various heating ranges from 0°C to 200°C (32°F up to 392°F).

The jackets are made from durable and long lasting high quality lightweight design and the construction combined with quick release buckles makes the jackets easy to attach to any standard sized drum.

Warm-up duration approx. 24h for 200 liters of water from 20°C to 82°C (+68°F to +180°F) using a 1200W drum heating jacket.

Ideal for heating up:

- Water.
- Oils and diesel fuel.
- Resin.
- Vaseline.
- Wax, e.g. lanolin (wool wax or wool grease).
- Fats.
- Butters e.g. Ghee.

All shown products are for 200L drums. See our price list for other drum sizes and options.



110V 1200W: 11-9858A
230V 1200W: 11-9858

Standard Drum Heating Jacket (0-90°C)

- Digital controller 0-90°C (32-194°F).
- Teflon coated Codura outer fabric.
- Silicone impregnated fiber glass hot side.
- 8mm polyester insulation.
- Teflon insulated resistance element.
- Internal thermal fuse (172°C).
- Adjustable quick release buckles.
- 3 meter (10 feet) power cable with Schuko combi connector or US connector.
- IP40 rated (option for IP54 controller).
- Top lid sold separately (Black lid for 200L drum: 15-1921).



110V 1200W: 11-9870A
230V 1200W: 11-9870

High temperature Drum Heating Jacket (0-200°C)

- Digital controller 0-200°C (32-392°F).
- Silicone impregnated fiber glass jacket.
- 6mm fiber glass insulation.
- Teflon insulated resistance element.
- Internal heat fuse (257°C).
- Adjustable quick release buckles.
- 3 meter (10 feet) power cable with Schuko combi connector or US connector.
- IP40 rated (option for IP54 controller).
- Top lid sold separately (Silver lid for 200L drum: 15-1921A).



1 zone - 230V 1200W: 19-2746
2 zones - 230V 2x600W: 12-1208DT

Foodstuff Drum Heating Jacket (0-120°C)

- Designed for food and pharmaceutical industries.
- 1 or 2 zones with full area coverage.
- Digital controller(s) 0-120°C (32-248°F).
- Silicone impregnated fiber glass jacket (FDA approved fabric for use with food).
- IP40 rated (IP54 rated controller).
- Other options and internal construction as HT Drum Heating Jackets.
- Top lid sold separately (White lid for 200L drum: 15-1921F).

OTHER DRUM HEATERS

Besides our Heating Jackets we have several other high quality heating solutions for drum heating.

The silicone heating bands are high power compared to heating jackets, but without the insulation.

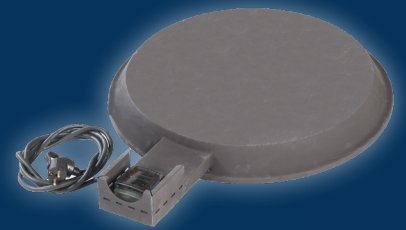
The base heaters are easy to use with high power and can be combined with the other heating or insulation products from our range for faster heatup times and better temperature stability.

All shown products are for 200L drums. See our price list for other drum sizes and options.



Base Drum Heater (0-120°C)

110V: 11-9868A
230V: 11-9868



HT Base Drum Heater (50-300°C)

110V: 12-1170A
230V: 12-1170



230V 1000W: 11-9867

Silicone Drum Heating Band (0-120°C)

- Designed in durable silicone materials.
- Simple design for easy usage.
- Thermostat with range from 0-120°C (32 - 248°F).
- Mount up to 3 heaters on one drum.
- 1,4 meter (4 feet) power cable.
- Also available for 25, 50, and 105 liter drums.
- Can be combined with Base Drum Heater.



110V 900W: 11-9868A
230V 900W: 11-9868

Base Drum Heater (0-120°C)

- Digital controller 0-120°C (32-248°F).
- Easy installation. Just place the drum on the drum heater and start heating the content.
- Size: Ø: 555mm / H: 105mm.
- Weight: 15 kg.
- 3 meter (10 feet) power cable with Schuko combi connector or US connector.
- Can be combined with other heating or insulation products from our range.



110V 1800W: 12-1170A
230V 1800W: 12-1170

High Temp. Base Drum Heater (50-300°C)

- Adjustable thermostat 50-300°C (122- 572°F).
- Easy installation. Just place the drum on the drum heater and start heating the content.
- Size: Ø: 555mm / H: 70mm.
- Weight: 15 kg.
- 3 meter power cord.
- Can be combined with other heating or insulation products from our range.

DRUM COVERS & INSULATION JACKETS

Drum insulation jackets are designed to insulate and maintaining temperature inside a drum barrel.

The insulation jackets and covers can be used in conjunction with a Base Drum Heater to speed up the heating process and to slow down the cooling proces, after the heater is unplugged.

Our insulation jackets and covers are made from durable materials and are easy to install.

Ideal for:

- Maintaining temperature inside a drum.
- Speeding up the heating process.
- Extra drum protection.
- Safe drum transportation.

All shown products are for 200L drums. See our price list for other drum sizes and options.



16-2105

Drum Lid with access holes

- Alternative to the standard lid.
- Access holes for easy access to drum openings.
- Cordura material with Teflon coating.
- 8mm polyester insulation.
- Water repellent.
- Chemical resistant.



17-2221

Drum PVC Cover

- Waterproof.
- Clear window for drum identification.
- Made from PVC.
- Can be combined with a Base Drum Heater.



11-9862

Drum Insulation Cover

- Opens in the top for access to drum.
- Opens in the side for easy installation.
- Nylon fabric.
- 8mm polyester insulation.
- Size: Ø:589 / H:860mm
- Can be combined with a Base Drum Heater.



Jacket: 17-2330

Drum Insulation Jacket

- Nylon fabric.
- 8mm polyester insulation.
- Adjustable quick release buckles.
- Fits standard 200L drum barrel.
- Can be combined with a lid and/or a Base Drum Heater.

IBC HEATING JACKETS

An IBC heating jacket is the perfect solution when it comes to quickly and effectively heating up fluids and materials making them very easy to empty out with minimal to no waste product. They are also useful for protection from UV radiation.

The IBC jackets come with up to 3 zone digital controllers, adjustable from 0-40°C or 0-90°C, making the jackets very fast and safe to heat liquids and maintaining the wanted viscosity for the content in the container.

The jackets are made from durable and long lasting high quality lightweight design and the construction, combined with quick release buckles and hooks for the top edge, makes the jackets easy to attach to any standard 1000L container.

The foodstuff container jackets are made especially for food and pharmaceutical industries.

Ideal for heating up:

- Water.
- Oils and diesel fuel.
- Resin.
- Vaseline.
- Wax, e.g. lanolin (wool wax or wool grease).
- Fats.
- Butters e.g. Ghee.

All shown products are for 1000L IBCs. See our price list for other sizes and options.



1 Zone (0-40°C)
1300W
230V: 11-9860A



2 Zone (0-90°C)
2x1000W
230V: 11-9860



3 Zone (0-90°C)
3x1000W
230V: 11-9861B

IBC Heating Jackets

- 1-3 zones with full area coverage and DigiTherm digital controllers:
 - 1 zone 0-40°C - 1300W.
 - 2 or 3 zones 0-90°C - 1000W per zone.
- Teflon coated Codura outer fabric.
- Silicone impregnated fiber glass hot side.
- 8mm polyester insulation.
- Teflon insulated resistance element.
- Internal thermal fuse (172°C).
- Class IP40.
- 3 meter (10 feet) power cable(s) with Schuko combi connector.
- Adjustable quick release buckles and edge hooks for attachment.
- Warm-up - heater & lid - 1000L drum with water from +15°C to +30°C:
 - 1 zone ~72 hours.
 - 2 zones ~20 hours.
 - 3 zones ~6 hours.
- Top lid sold separately (Black insulating lid: 11-9861D).



1 Zone 0-40°C
1300W
230V: 20-2798



2 Zone 0-90°C
2x1000W
230V: 20-2797

IBC Heating Jackets for foodstuff

- 1 or 2 zones with full area coverage and DigiTherm digital controllers:
 - 1 zone 0-40°C - 1300W.
 - 2 zones 0-90°C - 1000W per zone.
- Silicone impregnated fiber glass fabrics (FDA approved for food).
- 8mm polyester insulation.
- Teflon insulated resistance element.
- Internal thermal fuse (172°C).
- Class IP40 (IP54 rated controller).
- 3 meter (10 feet) power cable(s) with Schuko combi connector.
- Adjustable quick release buckles and edge hooks for attachment.
- Warm-up - heater & lid - 1000L drum with water from +15°C to +30°C:
 - 1 zone ~72 hours.
 - 2 zones ~20 hours.
- Top lid sold separately (White foodstuff insulating lid: 20-2799).

ATEX HEATING JACKETS



The ATEX Heating Jacket series are available in a range of sizes and configurations to suit different types of containers and dimensions and can be used to heat a variety of materials, including liquids, pastes, and solids. The heaters can be used for temperature classes T6, T5, T4, and T3 depending on the temperature setting of the limiter.

The construction of the heating jackets is robust, flexible, and dissipative, making it suitable for use both indoors and outdoors. They have a protection class of IP65/I, which means they are dust-tight and protected against water jets and rain. The heaters are system-approved with an EC-type examination certificate according to RL 2014/34/EU appendix III. Additionally, the heaters are delivered fully configured and ready to use without further acceptance procedures.

The ATEX Heating Jacket series must be controlled and limited with an ATEX controller/limiter that can be purchased separately from us or can be integrated with the customer's own ATEX controller system. Our ATEX controller/limiter is designed to meet the requirements of the ATEX directive, ensuring safe usage in potentially explosive atmospheres. The controller/limiter is easy to use and provide accurate temperature controlling and limiting, ensuring optimal performance and efficiency.



25/30L - 230V 350W: 23-4262
50/60L - 230V 400W: 23-4261
105L - 230V 800W: 23-4260
200L - 230V 1200W: 23-4259

ATEX Drum Heater

- Max. operating temperature: +180°C / +200°C (steel drum), +70°C (plastic drum).
- Temperature class: T6, T5, T4, T3 (depending on temperature setting).
- Electrical connection terminal boxes for network (EX-e) / sensor (EX-i).
- Protection class: IP65/I.
- Zones 1/2 (gas); 21/22 (dust).
- Sensors: 2xPt100 (EX-i, EX-e).
- Top lid sold separately (ATEX lid for 200L drum: 23-4263).
- Controller sold separately: 23-4258.



1000L - 230V 2400W: 23-4255

ATEX IBC Heater

- Max. operating temperature: +180°C / +200°C (steel IBC), +80°C (plastic IBC).
- Temperature class: T6, T5, T4, T3 (depending on temperature setting).
- Electrical connection terminal boxes for network (EX-e) / sensor (EX-i).
- Protection class: IP65/I.
- Zones 1/2 (gas); 21/22 (dust).
- Sensors: 2xPt100 (EX-i, EX-e).
- Top lid sold separately (ATEX lid for 200L drum: 23-4263).
- Controller sold separately: 23-4258.



10L - 230V 380W: 23-4266
50L - 230V 850W: 23-4265
79L - 230V 850W: 23-4264

ATEX Gas Bottle Heater

- Digital temperature controller (controller item#: 23-4258).
- ATEX temperature class T3, T4, T5, or T6. We recommend T6 (limited at 85°C) for gas bottles.
- ATEX zones 1/2 (gas) and 21/22 (dust). Dual PT100 sensors for safety.
- Suitable for indoor and outdoor use.
- IP65/I rated.
- Controller sold separately: 23-4258.

ATEX LB SERIES HEATING JACKETS & BASE HEATERS

The ATEX LB Series heaters are designed to meet the stringent safety requirements of explosion-prone environments. Certified for ATEX Zones 1, 2, 21, and 22, these heaters ensure safe and energy-efficient temperature control for containers with chemicals, oils, or other sensitive materials. With IP65-rated designs, they provide excellent resistance to dust and water, making them suitable for demanding industrial conditions.

The ATEX LB Series features self-limiting heating technology, reducing energy consumption as the temperature rises, ensuring safe and consistent heating, and avoiding the need for an external controller.

The ATEX-certified junction box enhances durability and simplifies cable replacement, adding to its reliability and ease of use.

Applications include frost protection, maintaining temperatures in chemical processing, and ensuring safe heating for volatile materials. Whether used in industrial production or storage, the ATEX LB Series delivers outstanding performance and safety.



200-220L 230V 660W: 24-4653

ATEX LB Series Drum Heater

- Certification: CETS 23 ATEX 030 X; CETS 23 ATEX 031 U.
- Zones: Suitable for Zones 1, 2, 21, and 22.
- T-Class: T6, T5, T4, T3, T2, T1.
- IP Rating: IP65.
- Operating Temperature: 65°C (energized) / 85°C (de-energized).
- Ambient Temperature: -20°C to +55°C.
- Materials: Anti-static, water-repellent PVC fabric (B2 Flame Retardant).
- Connection Cable: 5m, 3G1.5mm² with ATEX-certified junction box.
- Top lid sold separately (ATEX LB lid for 200-220L drum: 24-4654).



1000L 230V 1700W: 24-4651

ATEX LB Series IBC Heater

- Certification: CETS 23 ATEX 030 X; CETS 23 ATEX 031 U.
- Zones: Suitable for Zones 1, 2, 21, and 22.
- T-Class: T6, T5, T4, T3, T2, T1.
- IP Rating: IP65.
- Operating Temperature: 65°C (energized) / 85°C (de-energized).
- Ambient Temperature: -20°C to +55°C.
- Materials: Anti-static, water-repellent PVC fabric (B2 Flame Retardant).
- Connection Cable: 5m, 3G1.5mm² with replaceable ATEX-certified junction box.
- Top lid sold separately (ATEX LB lid for 1000L IBC:).

IBC BASE HEATER

The IBC Base Heater can be placed under an IBC bag-in-box system and can be adjusted to heat up to and hold temperatures in the range 0-150°C. The heating element is water resistant and will work well outside.

The IBC Base Heater can be combined with heating or insulating jackets, insulating lids, and/or covers for faster heatup times and better temperature stability.

The standard size is for 1000L IBC Bag-in-Box systems. (Ask for other sizes and options)



IBC Base Heater (incl. digital controller)

- Powerful base heater for IBC Bag-in-Box systems.
- 2700 Watt heater.
- External digital controller for accurate temperature control. PT100 sensor build in to the heating surface.
- Dimensions: 1035 - 851mm (fits a 1000L IBC).
- Materials: 100% silicone surface.
- Cables:
 - Heating mat: 2m incl. connector for controller.
 - Controller: 3m incl. Schuko combi connector.
- Environment:
 - Heating element: -10-40°C - IP64 rated.
 - Digital Controller: -10-40°C - IP54 rated.
- Heats water from 15°C - 70°C in less than 40 hours with a fully loaded IBC Bag-in-Box.
- Combine with heating jacket or insulating cover and lid for optimal effect.



IBC Base Heater
(incl. digital controller for 0-150°C)
2700W
230V: 13-1436S

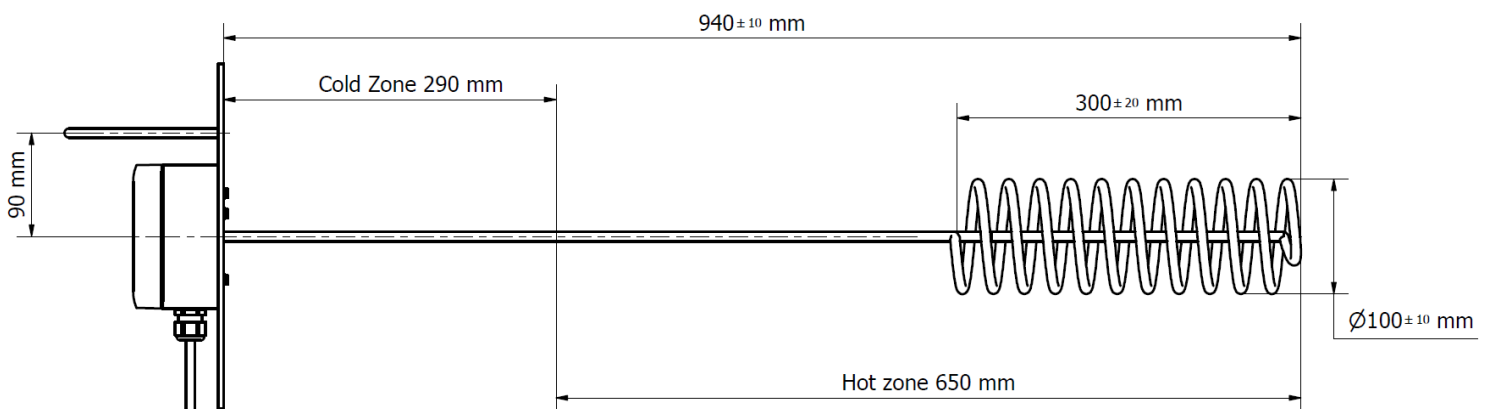
INTERNAL IBC HEATERS



IBC Immersion Heater 0-90°C
2000W
230V: 22-4158S

The IBC Immersion Heater is an efficient solution for heating liquids in Intermediate Bulk Containers (IBCs), addressing viscosity challenges to enhance industrial productivity. Suitable for a variety of substances, it ensures consistent heating and easy liquid management. Its applications span multiple industries, including chemical processing, pharmaceuticals, food and beverage, and oil and gas. Constructed with durable stainless steel, this immersion heater combines performance with longevity.

- Designed for 1000 litre cubic IBCs but will fit inside most IBC configurations.
- Adjustable temperature target from 0-90°C with included digital DigiTherm controller.
- Works well for mild acids, alkaline mixtures, water, and thin oil-based products.
(Only suitable for liquids with a watery consistency to avoid local overheating at the heating element as it has 2000W at a small surface area).
- Stainless steel tube element AISI 316L (1.4404) for durability.



(Note that it is important that all of the "Hot zone" is lowered into a liquid to avoid overheating.)

IBC COVERS & INSULATING JACKETS

IBC insulation jackets are designed to insulate and maintaining temperature inside an Intermediate Bulk Container (IBC).

Most of our insulation jackets can be used in conjunction with other IBC heaters to speed up the heating process and to slow down the cooling process, after the heater is unplugged.

Our insulation jackets and covers are made from durable materials and are easy to install to an IBC for better weather resistance or for use in wet or dusty working environments.

Ideal for:

- Maintaining temperature inside a container.
- Speeding up the heating process.
- Extra container protection.
- Safe container transportation.
- Protecting the content of the IBC from UV radiation.

All shown products are for 1000L IBCs. See our price list for other sizes and options.



11-9861D

IBC Lid with access hole

- Openings for easy access to IBC.
- Cordura material with Teflon coating.
- 8mm polyester insulation.
- Water repellent.
- Chemical resistant.
- Standard Size: 1000L.



15-1738

Deluxe Insulation Cover

- Insulating for maintaining temperature.
- Water repellent.
- Chemical resistant.
- Integrated lid.
- Strategically placed velcro access pads.
- Cordura materials with Teflon coating.
- 8mm polyester insulation.
- Can be used in conjunction with an IBC Base Heater.



Standard: 11-9861E
With transparent window: 23-4399

PVC Waterproof Cover

- 100% Waterproof.
- Produced in durable PVC materials.
- Welded seams for optimal waterproofing
- Versions with or without window.
- Sized to also fit an IBC with a Heating Jacket for limited weather protection of the Heating Jacket.
- Can be used in conjunction with an IBC Heating Jacket, a Lid, and/or an IBC Base Heater.



15-1736

Thermal Bubble Wrap Cover

- Protects IBC from overheating and sunlight when outside.
- Metallic aluminum inner- and outer.
- Bubble wrap foil interlayer.
- Top velcro pad for container access.
- Can be used in conjunction with an IBC Base Heater.

IBC COVERS & INSULATING JACKETS

IBC insulation jackets are designed to insulate and maintaining temperature inside an Intermediate Bulk Container (IBC).

Most of our insulation jackets can be used in conjunction with an IBC Heating Jacket or other IBC heaters to speed up the heating process. Adding an insulation jacket to a heater helps speed up the heating process and slows the cooling process, after the heater is unplugged.

Our insulation covers are designed in durable materials and are easy to install to an IBC for better weather resistance or for use in wet or dusty working environments.

Ideal for:

- Maintaining temperature inside a container.
- Speeding up the heating process.
- Extra container protection.
- Safe container transportation.
- Protecting the content of the IBC from UV radiation.

All shown products are for 1000L IBCs. See our price list for other sizes and options.



15-1740

Full Insulation Cover

- Full cover with no openings.
- Insulating for maintaining temperature.
- Water repellent.
- Nylon fabric.
- 8mm polyester insulation.
- Also fits standard pallets.
- Also available for 1250L and 640L containers.
- Can be used in conjunction with an IBC Base Heater.



15-1733

Insulation Cover

- Full cover with strategically placed velcro access pads.
- Insulating for maintaining temperature.
- Water repellent.
- Nylon fabric.
- 8mm polyester insulation.
- Also fits standard pallets.
- Also available for 1250L and 640L containers.
- Can be used in conjunction with an IBC Base Heater.



13-1432

Insulation Body Cover

- Insulating for maintaining temperature.
- Water repellent.
- Adjustable straps.
- Quick release buckles.
- Nylon fabric.
- 8mm polyester insulation.
- Can be used in conjunction with a Lid and/or an IBC Base Heater.

IBC HEATING JACKET WARMUP TIME

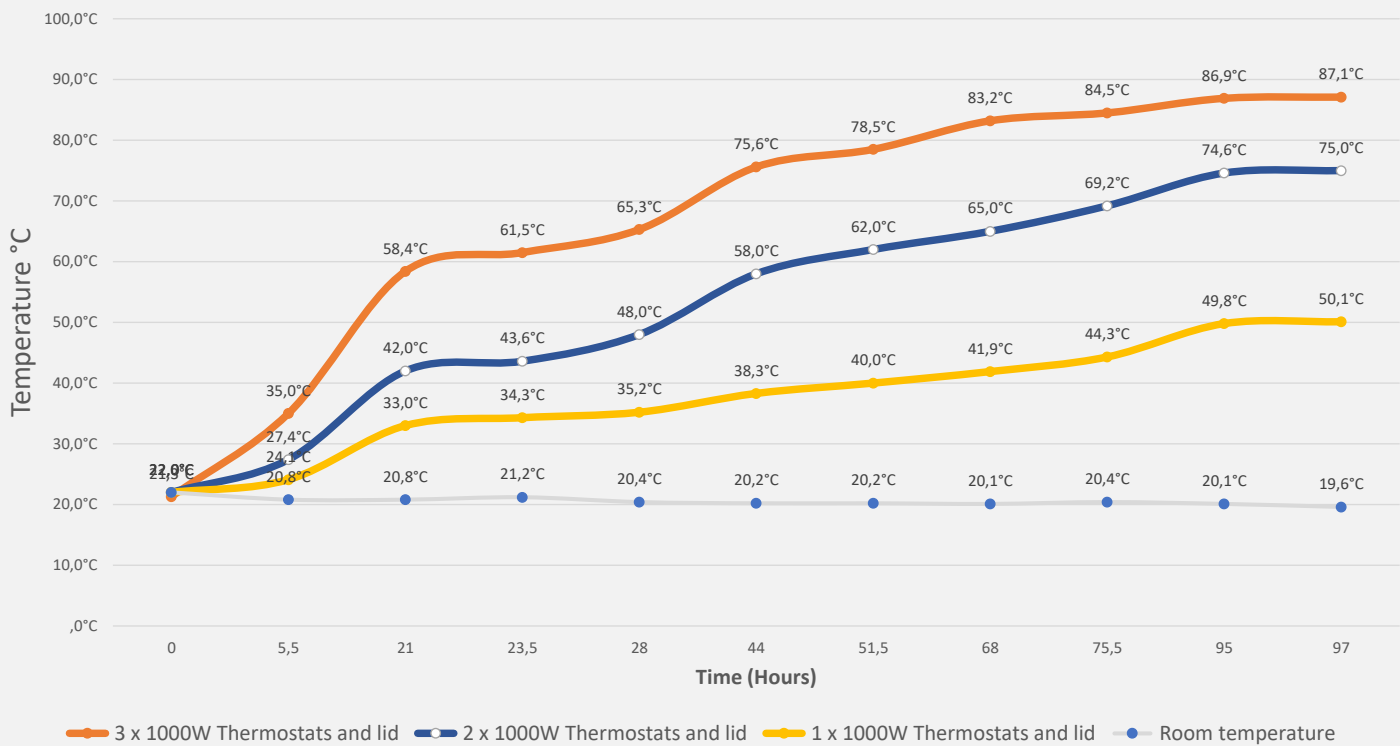
This is an example of warmup times for IBC Heating Jackets with 1, 2, or 3 zones.

The test is done on a 1000 liter IBC filled with water, with a Heating Jacket plus an insulating lid. The controller was set at 90°C during all three tests.

Results may vary depending on the IBC content, the environment, wind and other factors.



IBC Container Heating Performance
Contents: Water



GAS CYLINDER HEATERS



In the demanding environments of laboratories, various industries, craft workshops and production facilities that utilize gas extensively, ensuring a constant and stable flow of gas is paramount. However, a rapid reduction in the liquid gas level can lead to cylinder frosting, which not only significantly impacts the flow rate but also the precision of operations - especially critical when working with calibration gases in laboratories or maintaining high usage rates where nozzle freezing can halt production.

Our gas cylinder heaters are engineered to address this challenge, preventing frosting and ensuring the continuous flow rate your processes depend on.

Our heaters are crafted from materials that ensure longevity and efficiency. We've designed them to be easy to attach and detach from the cylinders, offering a hassle-free experience for users in any setting.

We offer standard sizes to fit common cylinder types, such as type K, readily available from our stock. We also produce custom heaters tailored to fit most other gas cylinders sizes.

Choosing our gas cylinder heaters safeguards your operations against the adverse effects of frosting, investing in reliability and uninterrupted productivity.



230V 500W: 23-4407

Gas Cylinder Silicone Heating Band

- 40°C (104°F) bi-metal thermostat.
- Dimensions: 890x120mm.
- For 22kg and 33kg standard gas bottles.
- Manually resettable over temperature fuse at 55°C (122°F).
- Flexible spring fastener.
- Water resistant.



230V 435W: 12-1200A

Gas Cylinder Heating Jacket

- Adjustable digital controller
- 0-40°C (32-104°F)
Optional: 0-90°C (194°F).
- Dimensions: 1050x860mm (41.3"x33.9").
- Silicone impregnated fiber glass jacket.
- 6mm glass fiber insulation.
- Teflon insulated spiral wound heating wire.
- Internal thermo fuse for 172°C (342°F).
- Adjustable quick release buckles.
- IP40 rated.



10L - 230V 380W: 23-4266
50L - 230V 850W: 23-4265
79L - 230V 850W: 23-4264

ATEX Gas Bottle Heater

- Digital temperature controller (controller item#: 23-4258).
- ATEX temperature class T3, T4, T5, or T6. We recommend T6 (limited at 85°C) for gas bottles.
- ATEX zones 1/2 (gas) and 21/22 (dust). Dual PT100 sensors for safety.
- Suitable for indoor and outdoor use.
- IP65/I rated.
- Controller sold separately: 23-4258.

GROUND THAWING BLANKET

With the ground thaw heating blanket you can easily thaw frozen ground and soil, frozen pipes, melt ice and snow, thaw frozen pipes, and use the blankets as freeze protection for pipelines and other equipment that are in risk of freezing.

The blankets are top-insulated and will only radiate heat in a downwards direction. Designed in durable waterproof and weatherproof materials, our thawing blankets are built to last and can withstand just about any condition.

Ideal for:

- Concrete curing
- Thawing frozen ground
- Preheating construction materials
- Freeze protecting construction materials
- Heat maintenance in electrical and telecom cables
- Excavation work



Thaws up to 30 cm. soil in 24 hours



Custom sizes available upon request



Fixed temperature (70°C)



Power cable with Schuko or blue CE connector

Ground Thawing Blanket (3 x 1 meter)

- Rating: 230V - 1050W.
- Fixed temperature (70°C).
- Durable PVC materials.
- 2-meter power cable.
- Schuko or industrial connector.
- IP67 Class.
- Special sizes produced upon request.
- In normal conditions the mat thaws up to 30 cm of soil in 24 hours - or up to 60 cm in more sandy soil/ground.



Ground Thawing Blanket 230V 1050W

Schuko connector: 17-2186
Blue CE connector: 17-2186A