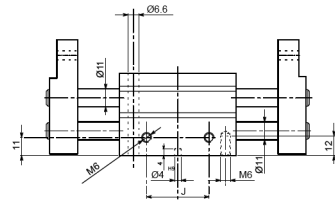
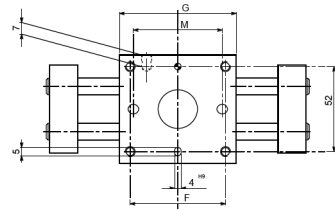
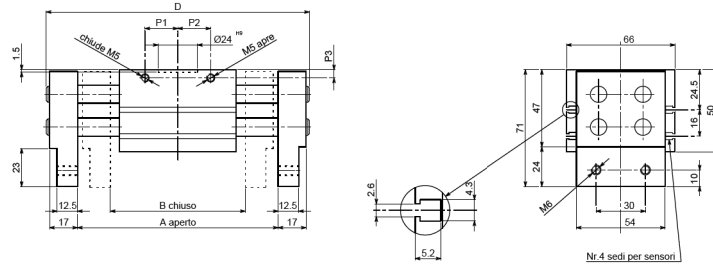




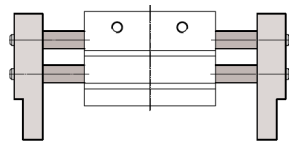
- **ORGANO DI PRESA A CORSA PARALLELA A DUE GRIFFE**
 - Two-jaw parallel gripper
 - Zwei-Finger Parallelgreifer
 - Pince de préhension à course parallèle, à deux griffes



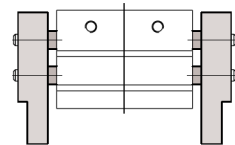
	ARTICOLO • ARTICLE • ARTIKEL • ARTÍCULO		
	VRG20-40	VRG20-80	VRG20-100
A	122	222	262
B	82	142	162
D	160	260	300
F	58	100	120
G	71	113	133
J	38	80	100
M	54	96	116
P1	20.5	34.5	44.5
P2	20.5	25	18.5
P3	7.7	7.7	7.7

• Le dimensioni sono indicative e suscettibili di variazioni per migliorie tecniche. Ci riserviamo di apportare modifiche senza preavviso • All dimensions are indicative and subject to variation for technical upgrading. We reserve the right to make alterations without prior notification • Die Maßangaben sind indikativ und können sich bei technischen Verbesserungen ändern. Wir behalten uns vor, ohne vorherige Benachrichtigung Änderungen vorzunehmen • Les dimensions sont fournies à titre indicatif, elles peuvent subir des variations pour cause d'améliorations techniques. Nous nous réservons le droit d'apporter des modifications sans préavis.

- **SCHEMA DI FUNZIONAMENTO • OPERATIONAL DIAGRAM**
- **BETRIEBSSCHEMA • SCHEMA DE FONCTIONNEMENT**



Aperto
Open
Geöffnet
Ouvvert



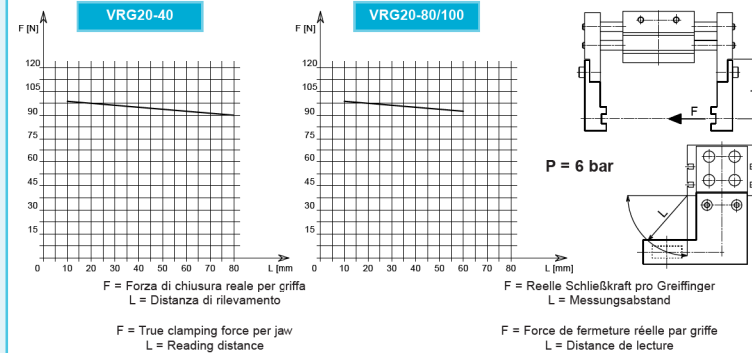
Chiuso
Closed
Geschlossen
Formé



tecnomors spa. - Via Roma 141/143 - 28017 San Maurizio d'Opaglio (NO) - Italy
tel.: 0322 96142 - fax.: 0322 967453 - e mail : info@tecnomors.it

- **ORGANO DI PRESA A CORSA PARALLELA A DUE GRIFFE**
 - Two-jaw parallel gripper
 - Zwei-Finger Parallelgreifer
 - Pince de préhension à course parallèle, à deux griffes

DIAGRAMMA FORZA DI CHIUSURA
CLAMPING FORCE DIAGRAM • DIAGRAM SCHLIEßKRAFT
DIAGRAMME DE LA FORCE DE FERMETURE



Valori nei dati tecnici rilevati alla distanza L = 10 mm • Technical specification values read at a distance L = 10 mm
• Werte der technischen Daten auf Distanz aufgenommen L = 10 mm • Valeurs des données techniques relevées à la distance L = 10 mm

DATI TECNICI VRG20	40			80			100			TECHNISCHE DATEN VRG20	40			80			100		
	VRG20-40	VRG20-80	VRG20-100	VRG20-40	VRG20-80	VRG20-100	VRG20-40	VRG20-80	VRG20-100		VRG20-40	VRG20-80	VRG20-100	VRG20-40	VRG20-80	VRG20-100	VRG20-40	VRG20-80	VRG20-100
Corsa per griffa (mm)	20	40	50	20	40	50	20	40	50	Hub pro Greifinger (mm)	20	40	20	40	20	40	20	40	50
Corsa pistone (mm)	20	40	50	20	40	50	20	40	50	Kolbenhub (mm)	20	40	20	40	20	40	20	40	50
Volume aria doppia corsa (cm ³)	17.6	35.2	44	17.6	35.2	44	17.6	35.2	44	Luftvolumen pro Doppelhub (cm ³)	17.6	35.2	17.6	35.2	17.6	35.2	17.6	35.2	44
Forza teorica di chiusura per griffa a 6 bar (N)	129	129	129	129	129	129	129	129	129	Theoretische Schließkraft pro Greifinger 6 bar (N)	129	129	129	129	129	129	129	129	129
Forza reale di chiusura per griffa a 6 bar (N)	100	100	100	100	100	100	100	100	100	Reale Schließkraft pro Greifinger 6 bar (N)	100	100	100	100	100	100	100	100	100
Forza teorica di apertura per griffa a 6 bar (N)	129	129	129	129	129	129	129	129	129	Theoretische Öffnungskraft pro Greifinger 6 bar (N)	129	129	129	129	129	129	129	129	129
Forza reale di apertura per griffa a 6 bar (N)	100	100	100	100	100	100	100	100	100	Reale Öffnungskraft pro Greifinger 6 bar (N)	100	100	100	100	100	100	100	100	100
Pressione di esercizio (bar)	1-6	1-6	1-6	1-6	1-6	1-6	1-6	1-6	1-6	Betriebsdruck (bar)	1-6	1-6	1-6	1-6	1-6	1-6	1-6	1-6	1-6
Ripetibilità (mm)	±0.1	±0.1	±0.1	±0.1	±0.1	±0.1	±0.1	±0.1	±0.1	Wiederholbarkeit (mm)	±0.1	±0.1	±0.1	±0.1	±0.1	±0.1	±0.1	±0.1	±0.1
Peso (Kg)	1.025	1.495	1.69	1.025	1.495	1.69	1.025	1.495	1.69	Peso (Kg)	1.025	1.495	1.025	1.495	1.025	1.495	1.025	1.495	1.69
Temperatura di esercizio (°C)	-10-60	-10-60	-10-60	-10-60	-10-60	-10-60	-10-60	-10-60	-10-60	Temperatura di esercizio (°C)	-10-60	-10-60	-10-60	-10-60	-10-60	-10-60	-10-60	-10-60	-10-60
Articolo	VG100ABD	VG100ABE	VG100ABF	VG100ABD	VG100ABE	VG100ABF	VG100ABD	VG100ABE	VG100ABF	Articolo	VG100ABD	VG100ABE	VG100ABD	VG100ABE	VG100ABD	VG100ABE	VG100ABD	VG100ABE	VG100ABF

SPECIFICATIONS VRG20	40			80			100			DONNÉES TECHNIQUES VRG20	40			80			100		
	VRG20-40	VRG20-80	VRG20-100	VRG20-40	VRG20-80	VRG20-100	VRG20-40	VRG20-80	VRG20-100		VRG20-40	VRG20-80	VRG20-100	VRG20-40	VRG20-80	VRG20-100	VRG20-40	VRG20-80	VRG20-100
Stroke per jaw (mm)	20	40	50	20	40	50	20	40	50	Course par griffe (mm)	20	40	20	40	20	40	20	40	50
Piston stroke (mm)	20	40	50	20	40	50	20	40	50	Course piston (mm)	20	40	20	40	20	40	20	40	50
Dual stroke air volume (cm ³)	17.6	35.2	44	17.6	35.2	44	17.6	35.2	44	Volume d'air pour course double (cm ³)	17.6	35.2	17.6	35.2	17.6	35.2	17.6	35.2	44
Theoretical clamping force per jaw at 6 bar (N)	129	129	129	129	129	129	129	129	129	Force théorique en fermeture par griffe à 6 bar (N)	129	129	129	129	129	129	129	129	129
Actual clamping force per jaw at 6 bar (N)	100	100	100	100	100	100	100	100	100	Force réelle en fermeture par griffe à 6 bar (N)	100	100	100	100	100	100	100	100	100
Theoretical opening force per jaw at 6 bar (N)	129	129	129	129	129	129	129	129	129	Force théorique en ouverture par griffe à 6 bar (N)	129	129	129	129	129	129	129	129	129
Actual opening force per jaw at 6 bar (N)	100	100	100	100	100	100	100	100	100	Force réelle en ouverture par griffe à 6 bar (N)	100	100	100	100	100	100	100	100	100
Working pressure (bar)	1-6	1-6	1-6	1-6	1-6	1-6	1-6	1-6	1-6	Pression d'exercice (bar)	1-6	1-6	1-6	1-6	1-6	1-6	1-6	1-6	1-6
Reproducibility (mm)	±0.1	±0.1	±0.1	±0.1	±0.1	±0.1	±0.1	±0.1	±0.1	Répétibilité (mm)	±0.1	±0.1	±0.1	±0.1	±0.1	±0.1	±0.1	±0.1	±0.1
Weight (Kg)	1.025	1.495	1.69	1.025	1.495	1.69	1.025	1.495	1.69	Poids (Kg)	1.025	1.495	1.025	1.495	1.025	1.495	1.025	1.495	1.69
Working temperature (°C)	-10-60	-10-60	-10-60	-10-60	-10-60	-10-60	-10-60	-10-60	-10-60	Température d'exercice (°C)	-10-60	-10-60	-10-60	-10-60	-10-60	-10-60	-10-60	-10-60	-10-60
Article code	VG100ABD	VG100ABE	VG100ABF	VG100ABD	VG100ABE	VG100ABF	VG100ABD	VG100ABE	VG100ABF	Code article	VG100ABD	VG100ABE	VG100ABD	VG100ABE	VG100ABD	VG100ABE	VG100ABD	VG100ABE	VG100ABF

tecnomors spa. - Via Roma 141/143 - 28017 San Maurizio d'Opaglio (NO) - Italy
tel.: 0322 96142 - fax.: 0322 967453 - e mail : info@tecnomors.it

