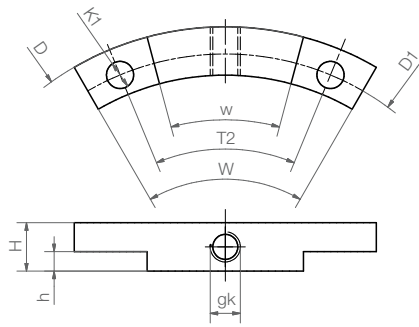
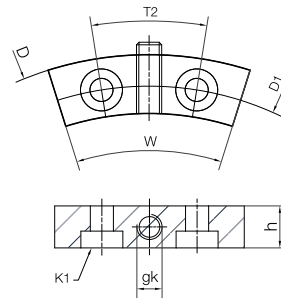


For type 01

Manual clamp



PRT-HK-30



PRT-HK-50/60/100/200



PRT with fitted manual clamp

- With 1Nm screw torque, a holding torque up to 10Nm is possible
- Easy to screw onto outer ring

Dimensions [mm]

D	D1	T2	K1 for screw	H	h	gk	W	Part No.
100	91	45°	Ø 4.5	8	3.2	M5	60°	PRT-HK-30
150	135	22.5°	ISO 4762 M6	–	10	M6	40°	PRT-HK-50
160	145	18°	DIN 7984 M5	–	10	M6	35°	PRT-HK-60
205	185	22.5°	DIN 7984 M5	–	10	M6	40°	PRT-HK-100 ¹²⁾
320	300	22.5°	DIN 7984 M6	–	10	M6	40°	PRT-HK-200 ¹²⁾

¹²⁾ To be connected only with enlarged outer ring

Manual clamp



- For type 01, size 60

Part No.
PRT-HK-60-K