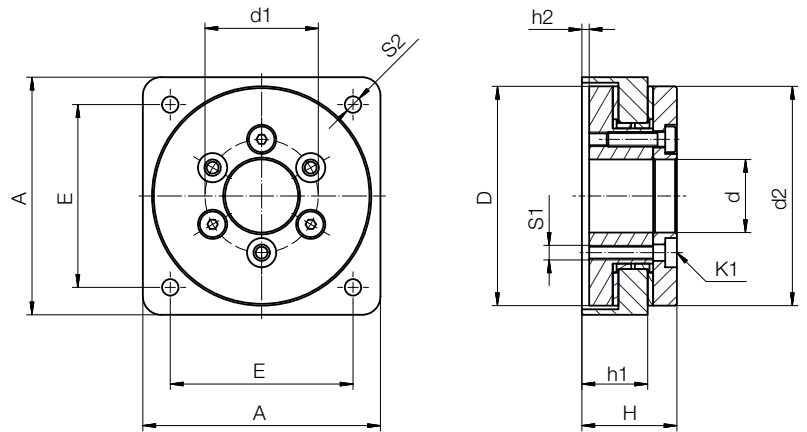
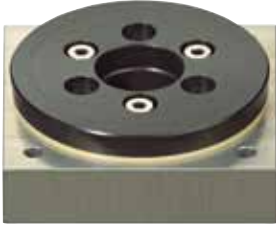


Type 01

Slewing rings with square flange for direct mounting on flat surfaces

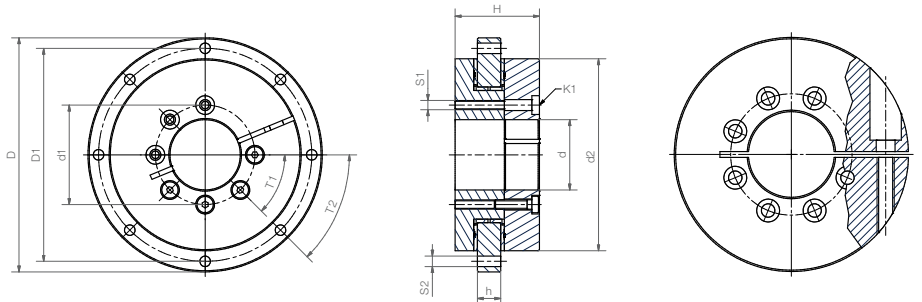


- No through-hole necessary
- No separate spacing ring
- Fix with only 4 screws

Dimensions [mm]

d	d1	d2	D	A	E	H	h1	h2	T1	S1	S2	K1	Part No.
												for screw	
20	31.0	60	62	65	50	26.0	18	2.0	6 x 60°	M4	4.5	DIN 7984 M4	PRT-01-20-SQ
30	42.5	82	84	85	65	30.5	21	1.5	8 x 45°	M4	4.5	DIN 7984 M4	PRT-01-30-SQ
50	65.0	120	122	125	100	34.5	23	1.5	8 x 45°	M6	6.6	ISO 4762 M6	PRT-01-50-SQ

Slewing rings with collar clamp



Slewing ring with PRT-01-30-C collar clamp

Collar clamp for PRT-01-30-C

Slewing ring PRT-01-30 with collar clamp for 30h7 tolerance shafts.

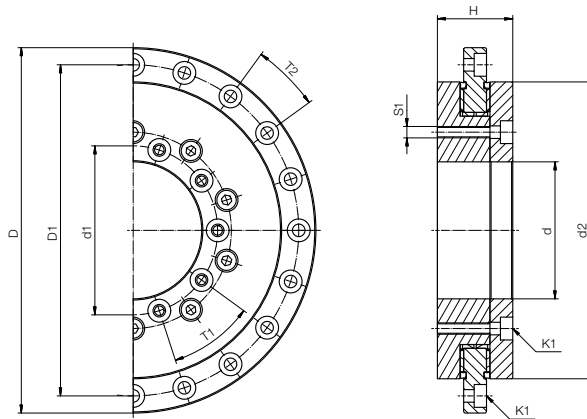
- For simple handling designs
- Quick and easy assembly
- Max. tightening torque: 5Nm

Dimensions [mm]

D	D1	d1	d	d2	H	h	T1	T2	S1	S2	K1	Part No.
												for screw
80	70	31	20	60	33	8	4 x 60°	6 x 60°	M4	4.5	DIN 7984 M4	PRT-01-20-C New
100	91	42.5	30	82	36	10	6 x 45°	8 x 45°	M4	4.5	DIN 7984 M4	PRT-01-30-C

Type 01

Slewing rings with seal (-D: one-sided, -DD: both-sided)

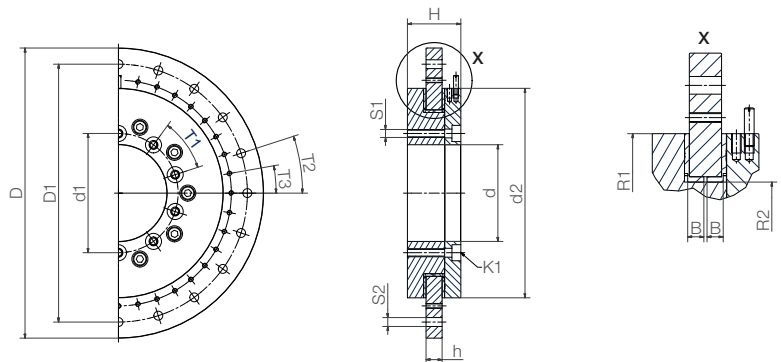
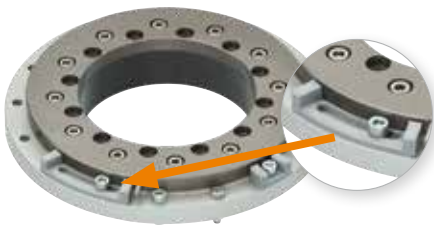


Dimensions [mm]

D ¹⁰⁾	D1	d1	d	d2	H	h	T1	T2	S1	S2	K1	R1	R2	B	Part No.
				±0.2							for screw				
160	145	74	60	130	33	10	10 x 36°	20 x 18°	M5	5.5	ISO 4762 M5	65	51.5	4.5	PRT-01-60-D/DD
185	170	112	100	160	34	12	12 x 30°	16 x 22.5°	M5	5.5	ISO 4762 M5	80	69	5.5	PRT-01-100-D/DD

¹⁰⁾ Tolerance according to DIN ISO 2768 mK

Slewing rings with angle stop – easily adjustable



- Quick adjustment of the stop
- Load ratings identical to standard type 01

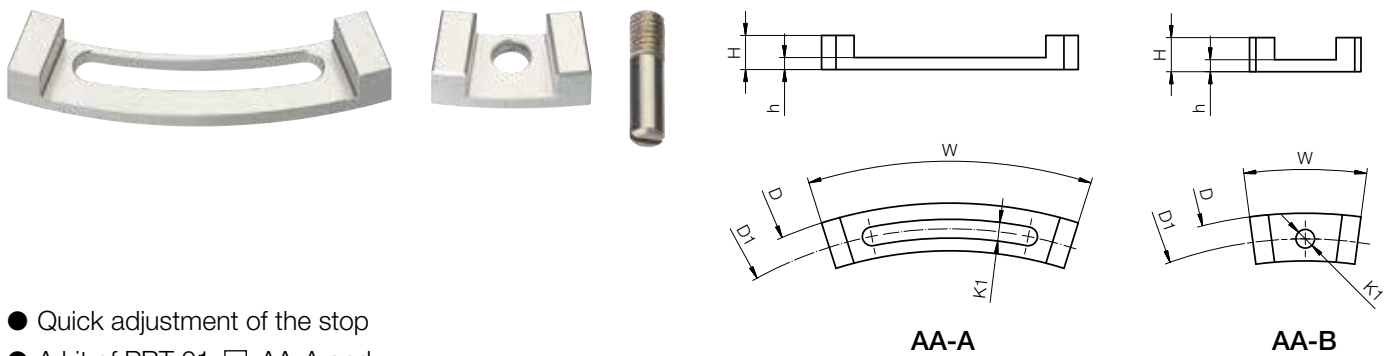
Dimensions [mm]

D ¹⁰⁾	D1	d1	d	d2	H	h	T1	T2	S1	S2	K1	R1	R2	B	Part No.
				±0.2							for screw				
80	70	31.0	20	60	24	8	6 x 60°	6 x 60°	M4	4.5	DIN 7984 M4	30	20	3.5	PRT-01-20-AA
100	91	42.5	30	82	29	10	8 x 45°	8 x 45°	M4	4.5	DIN 7984 M4	41	29	4.5	PRT-01-30-AA
150	135	65.0	50	120	33	10	8 x 45°	16 x 22.5°	M6	6.6	ISO 4762 M6	60	46.5	4.5	PRT-01-50-AA
160	145	74.0	60	130	33	10	10 x 36°	20 x 18°	M5	5.5	ISO 4762 M5	65	51.5	4.5	PRT-01-60-AA
185	170	112.0	100	160	34	12	12 x 30°	16 x 22.5°	M5	5.5	ISO 4762 M5	80	69	5.5	PRT-01-100-AA
250	235	165.0	150	220	35	12	12 x 30°	16 x 22.5°	M5	5.5	ISO 4762 M5	110	96.5	5.5	PRT-01-150-AA
300	285	215.0	200	274	38	15	12 x 30°	16 x 22.5°	M6	6.6	ISO 4762 M6	137	124	7.0	PRT-01-200-AA
450	430	320.0	300	410	42	15	12 x 30°	16 x 22.5°	M8	9.0	DIN 7984 M8	205	186.6	7.0	PRT-01-300-AA

¹⁰⁾ Tolerance according to DIN ISO 2768 mK

Type 01

Angle limit kit



- Quick adjustment of the stop
- A kit of PRT-01-□-AA-A and PRT-01-□-AA-B

Dimensions [mm]

D Ø	D1 Ø	H	h	K1 Ø	W [°]	Part No.	Part No. kit
80	70	6.5	2.8	4.5	90.0	PRT-01-20-AA-A	PRT-01-20-AA-KIT
80	70	6.5	2.8	4.5	30.0	PRT-01-20-AA-B	
100	91	8.0	2.8	4.5	70.0	PRT-01-30-AA-A	PRT-01-30-AA-KIT
100	91	8.0	2.8	4.5	25.0	PRT-01-30-AA-B	
150	135	10.0	4.0	6.6	45.0	PRT-01-50-AA-A	PRT-01-50-AA-KIT
150	135	10.0	4.0	6.6	25.0	PRT-01-50-AA-B	
160	145	10.0	3.5	5.5	35.0	PRT-01-60-AA-A	PRT-01-60-AA-KIT
160	145	10.0	3.5	5.5	20.0	PRT-01-60-AA-B	
185	170	9.5	3.5	5.5	37.5	PRT-01-100-AA-A	PRT-01-100-AA-KIT
185	170	9.5	3.5	5.5	15.0	PRT-01-100-AA-B	
250	235	10.0	3.5	5.5	35.0	PRT-01-150-AA-A	PRT-01-150-AA-KIT
250	235	10.0	3.5	5.5	15.0	PRT-01-150-AA-B	
300	285	10.0	4.0	6.6	35.0	PRT-01-200-AA-A	PRT-01-200-AA-KIT
300	285	10.0	4.0	6.6	15.0	PRT-01-200-AA-B	
450	430	12.0	5.0	6.6	35.0	PRT-01-300-AA-A	PRT-01-300-AA-KIT
450	430	12.0	5.0	6.6	15.0	PRT-01-300-AA-B	

Slewing rings for manual adjustment **New**



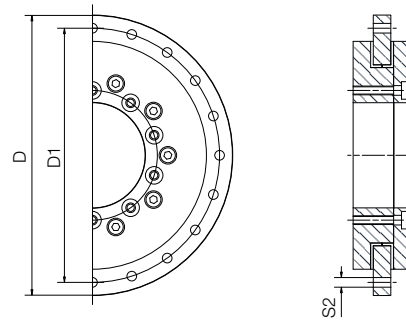
- With hand wheel for easy adjustment
- Optional manual clamp and position indicator available
- Ideal for fast and secure positioning

Dimensions [mm]

ØT	ØS	ØP	ØF	L1	L2	B1	B2	B3	H1	S1	S2	G1	G2	Part No.
30	10	82	42.5	100.5	12	45	19.5	6	110.5	55	20	M4	8 x M4	PRT-01-50 HK-PA-HR

Type 01

Slewing rings with enlarged outer ring

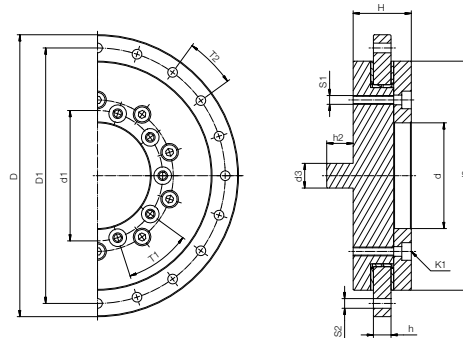


Dimensions [mm] – other dimensions similar to standard type PRT-01 ► Page 638

D	D1	S2	Part No. ¹¹⁾
205	185	5.5	PRT-01-100-M-ARG
205	185	M6	PRT-01-100-M-ARGG
205	185	5.5	PRT-01-100-M-ARGS
320	300	7.0	PRT-01-200-M-ARG
320	300	M8	PRT-01-200-M-ARGG
320	300	7.0	PRT-01-200-M-ARGS

¹¹⁾ Ending: -G standard hole, -GG threaded hole or -GS counterbore

PRT with assembled drive pin

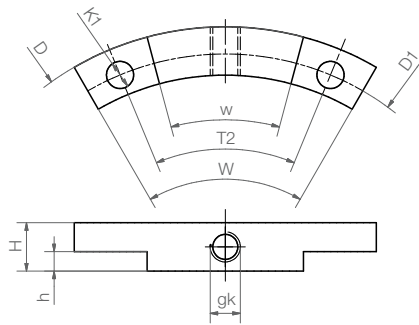


Dimensions [mm]

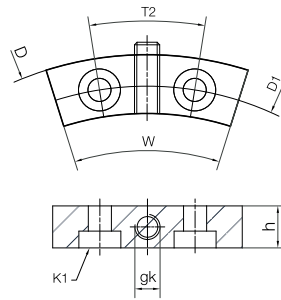
D	D1	d1	d	d2	d2- tolerance	H	h	T1	T2	S1	S2	K1	R1	R2	B	h2	Part No.
160	145	74	60	130	±0,2	33	10	10 x 36°	20 x 18°	M5	5,5	M5	65	51,5	4,5	15	PRT-01-60-DP

For type 01

Manual clamp



PRT-HK-30



PRT-HK-50/60/100/200



PRT with fitted manual clamp

- With 1Nm screw torque, a holding torque up to 10Nm is possible
- Easy to screw onto outer ring

Dimensions [mm]

D	D1	T2	K1 for screw	H	h	gk	W	Part No.
100	91	45°	Ø 4.5	8	3.2	M5	60°	PRT-HK-30
150	135	22.5°	ISO 4762 M6	–	10	M6	40°	PRT-HK-50
160	145	18°	DIN 7984 M5	–	10	M6	35°	PRT-HK-60
205	185	22.5°	DIN 7984 M5	–	10	M6	40°	PRT-HK-100 ¹²⁾
320	300	22.5°	DIN 7984 M6	–	10	M6	40°	PRT-HK-200 ¹²⁾

¹²⁾ To be connected only with enlarged outer ring

Manual clamp



- For type 01, size 60

Part No.
PRT-HK-60-K

For type 01

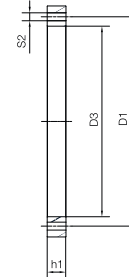
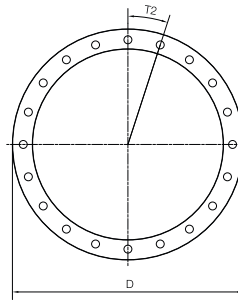
Spacing rings made from anodised aluminium or polymer (POM)



Aluminium



Plastic



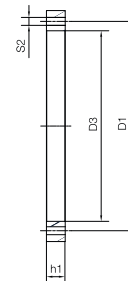
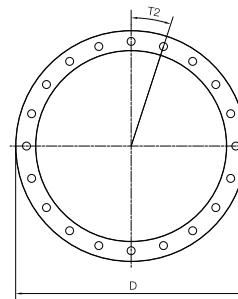
PRT with mounted spacing ring

Dimensions [mm]

D	D1	T2	S2	D3	h1	Part No. ³⁹⁾
80	70	6 x 60°	4.5	62	10	PRT-01-20-DR
100	91	8 x 45°	4.5	84	11	PRT-01-30-DR
150	135	16 x 22.5°	6.6	122	13	PRT-01-50-DR
160	145	20 x 18°	5.5	132	13	PRT-01-60-DR
185	170	16 x 22.5°	5.5	162	13	PRT-01-100-DR
250	235	16 x 22.5°	5.5	222	13	PRT-01-150-DR
300	285	16 x 22.5°	7.0	276	13	PRT-01-200-DR
450	430	16 x 22.5°	9.0	412	15	PRT-01-300-DR

³⁹⁾ Please add suffix "-POM" for plastic version (not available for sizes 150 and 300)

Spacing ring for heavy duty applications **New**



- Steel version to avoid distortion during installation
- Dimensional range of 20mm to 300mm inner diameters
- iglidur® PRT modular system: can be combined with all sizes
- High corrosion resistance
- Lubrication and maintenance-free

Dimensions [mm]

D	D1	T2	S2	D3 ±0.2	h1	Part No.
80	70	6 x 60°	4.5	62	20	PRT-01-20-DR-HD
100	91	8 x 45°	4.5	84	22	PRT-01-30-DR-HD
150	135	16 x 22.5°	6.6	122	26	PRT-01-50-DR-HD
160	145	20 x 18°	5.5	132	26	PRT-01-60-DR-HD
185	170	16 x 22.5°	5.5	162	26	PRT-01-100-DR-HD
250	235	16 x 22.5°	5.5	222	26	PRT-01-150-DR-HD
300	285	16 x 22.5°	7.0	276	26	PRT-01-200-DR-HD
450	430	16 x 22.5°	9.0	412	30	PRT-01-300-DR-HD