



Standard



High temperature
up to +180°C



Stainless steel version



ESD-compliant

- Aluminium or stainless steel body (upon request)
- Replaceable maintenance-free sliding elements made of iglidur® J (Standard) iglidur® H1 (for temperatures up to +180°, iglidur® F2 (ESD-compliant) iglidur® A180 (FDA-compliant)



Order key

Type	Size [mm]	Options
------	-----------	---------

PRT-01- 30 -ES-H1

Slewing ring	Design	Inner Ø	Body material	Sliding elements
--------------	--------	---------	---------------	------------------

Options:

Body material

Blank: Aluminium

ES: 316 stainless steel

Sliding elements

Blank: iglidur® J

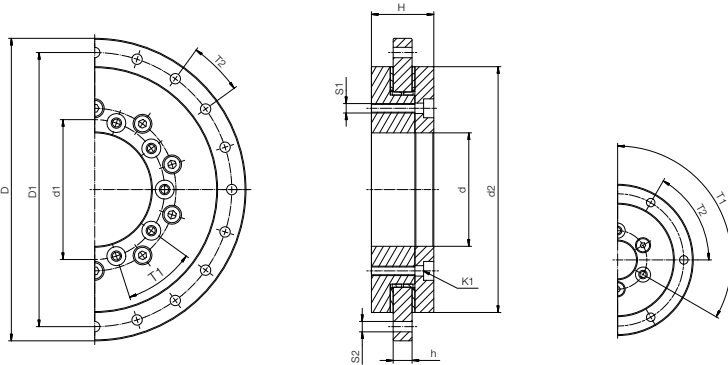
H1: iglidur® H1,
high temperature

F2: iglidur® F2,
ESD-compliant
(only in conjunction
with stainless steel)

A180: iglidur® A180,
FDA-compliant



Accessories



Dimensions [mm]

D ¹⁰⁾	D1	d1	d	d2 ±0.2	H	h	T1	T2	S1	S2	K1 for screw		R1	R2	B	Part No.
80	70	31	20	60	24	8	3 x 120°	6 x 60°	M4	4.5	DIN 7984	M4	30	20	3.5	PRT-01-20-...
100	91	42.5	30	82	29	10	4 x 90°	8 x 45°	M4	4.5	DIN 7984	M4	41	29	4.5	PRT-01-30-...
150	135	65	50	120	33	10	8 x 45°	16 x 22.5°	M6	6.6	ISO 4762	M6	60	46.5	4.5	PRT-01-50-...
160	145	74	60	130	33	10	10 x 36°	20 x 18°	M5	5.5	ISO 4762	M5	65	51.5	4.5	PRT-01-60-...
185	170	112	100	160	34	12	12 x 30°	16 x 22.5°	M5	5.5	ISO 4762	M5	80	69	5.5	PRT-01-100-...
250	235	165	150	220	35	12	12 x 30°	16 x 22.5°	M5	5.5	ISO 4762	M5	110	96.5	5.5	PRT-01-150-...
300	285	215	200	274	38	15	12 x 30°	16 x 22.5°	M6	6.6	ISO 4762	M6	137	124	7.0	PRT-01-200-...
450	430	320	300	410	42	15	12 x 30°	16 x 22.5°	M8	9.0	DIN 7984	M8	205	186.6	7.0	PRT-01-300-...

¹⁰⁾ Tolerance according to DIN ISO 2768 mK



All stainless steel versions
upon request