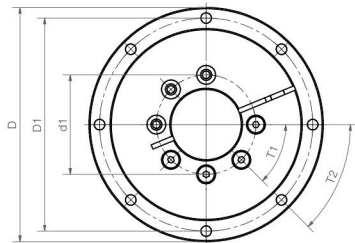
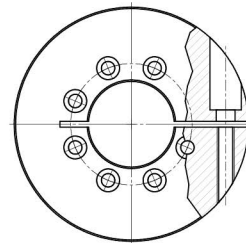
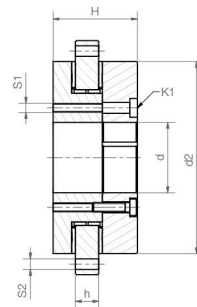


Slewing rings with collar clamp



Slewing ring with PRT-01-30-C collar clamp



Collar clamp for
PRT-01-30-C

Slewing ring PRT-01-30 with collar clamp for 30h7 tolerance shafts.

- For simple handling designs
- Quick and easy assembly
- Max. tightening torque: 5Nm

Dimensions [mm]

D	D1	d1	d	d2	H	h	T1	T2	S1	S2	K1	Part No.
											for screw	
80	70	31	20	60	33	8	4 x 60°	6 x 60°	M4	4.5	DIN 7984 M4	PRT-01-20-C New
100	91	42.5	30	82	36	10	6 x 45°	8 x 45°	M4	4.5	DIN 7984 M4	PRT-01-30-C