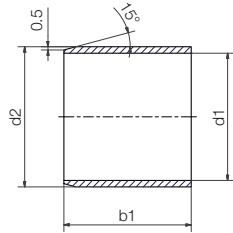


## Bearing technology | Plain bearing | iglidur® TX1

### Sleeve bearing (form S)



Order example: **TX1SM-2025-20** – no minimum order quantity.

**TX1** iglidur® material **S** Sleeve bearing **M** Metric **20** Inner Ø **d1** **25** Outer Ø **d2** **20** Total length **b1**

d1 [mm]	d1 Tolerance <sup>38)</sup>	d2 [mm]	b1 h13 [mm]	Part No.	
20.0	+0.020 +0.150	25.0	20.0	TX1SM-2025-20	
20.0		25.0	30.0	TX1SM-2025-30	
20.0		25.0	40.0	TX1SM-2025-40	
20.0		30.0	30.0	TX1SM-2030-30	
25.0		30.0	20.0	TX1SM-2530-20	
25.0		30.0	30.0	TX1SM-2530-30	
25.0		30.0	40.0	TX1SM-2530-40	
30.0		35.0	30.0	TX1SM-3035-30	
30.0		35.0	40.0	TX1SM-3035-40	
30.0		40.0	40.0	TX1SM-3040-40	
40.0	+0.025 +0.175	45.0	40.0	TX1SM-4045-40	
40.0		50.0	50.0	TX1SM-4050-50	
50.0		55.0	50.0	TX1SM-5055-50	
50.0		60.0	60.0	TX1SM-5060-60	
60.0		65.0	60.0	TX1SM-6065-60	
60.0		70.0	80.0	TX1SM-6070-80	
70.0		75.0	60.0	TX1SM-7075-60	
70.0		80.0	100.0	TX1SM-7080-100	
80.0		+0.050 +0.200	85.0	100.0	TX1SM-8085-100
80.0			90.0	100.0	TX1SM-8090-100

<sup>38)</sup> After press-fit of the bearing in a housing with nominal dimension