

New



... extremely wear-resistant ...

... lasts very long on aluminium shafts ... iglidur® E ...

Tech up

- Very low coefficient of friction
- Wear-resistant material for continuous operation
- Vibration-dampening

Cost down

- Cost-effective
- Maintenance-free
- Higher running performance than iglidur® J

Proof

- Lasts up to three times longer in rotating and linear applications than iglidur® J
- **Test:** linear movement, load 1MPa, speed 0.1m/s, shaft: aluminium hc.
Result: iglidur® J 0.84µm/km, iglidur® E 0.17µm/km
- **Test:** rotating: load 1MPa, speed 0.3m/s, shaft aluminium hc.
Result: iglidur® J 0.3µm/km, iglidur® E 0.1µm/km

Sustainability

- Environmentally friendly as no additional lubricants needed
- Good coefficient of wear and therefore a long service life
- iglus® supports the circular economy of plastics and is investing in chemical recycling. Learn more about this topic at:
www.igus.eu/plastic2oil

General properties

Density	1.50g/cm³
Colour	beige
Max. moisture absorption at +23°C and 50% r. h.	0.2% weight
Max. total moisture absorption	1.7% weight

Electrical properties

Specific contact resistance	> 10 ¹² Ωcm
Surface resistance	> 10 ¹² Ω

Chamfer in relation to d1

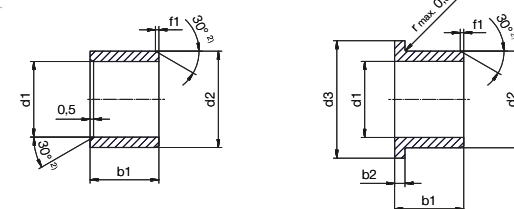
d1 [mm]:	Ø 1-6	Ø 6-12	Ø 12-30	Ø >30
f1 [mm]:	0.3	0.5	0.8	1.2

Mechanical properties

Shore D hardness	78
Flexural modulus	2,975MPa

Thermal properties

Max. long-term application temperature	+90°C
Max. short-term application temperature	+120°C
Min. application temperature	-50°C



Dimensions [mm] – cylindrical bearings

Part No.	d1	d1 tolerance*	d2	b1 h13
ESM-0608-06	6	+0.020 +0.068	8	6
ESM-0810-10	8	+0.025 +0.083	10	10
ESM-1012-10	10	+0.025 +0.083	12	10
ESM-1214-12	12	+0.032 +0.102	14	12
ESM-1618-15	16	+0.032 +0.102	18	15
ESM-2023-20	20	+0.040 +0.124	23	20

Dimensions [mm] – flanged bearings

Part No.	d1	d1 tolerance*	d2	d3	b1 h13	b2
EFM-0608-06	6	+0.020 +0.068	8	12	8.0	1.0
EFM-0810-10	8	+0.025 +0.083	10	15	9.5	1.0
EFM-1012-10	10	+0.025 +0.083	12	18	9.0	1.0
EFM-1214-12	12	+0.032 +0.102	14	20	12.0	1.0
EFM-1618-17	16	+0.032 +0.102	18	24	17.0	1.0
EFM-2023-21	20	+0.040 +0.124	23	30	21.5	1.5

Available from stock

* After press-fit of the bearing in a housing with nominal dimension, the inner diameter of the bearing adjusts itself to a E10 tolerance.