

High temperature bearing iglidur® AX500

... electrically discharging
and extremely robust...

Further development of the iglidur® A500 with optimised service life in the high-temperature range up to +250°C.



suitable for high operating temperatures up to +250°C

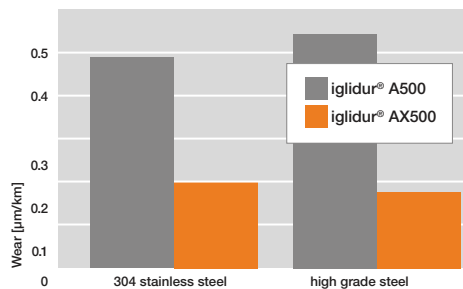


Tech up

- Suitable for high operating temperatures up to +250°C
- EU10/2011-compliant
- Electrically conductive
- More wear-resistant than iglidur® A500
- Service life can be calculated online

Proof

- Rotating wear, p=1MPa; v=0.3m/s



Cost down

- Maintenance-free
- iglidur® AX500 achieves better wear results than iglidur® AC500 in many applications
- More cost-effective than comparable solutions made of stainless steel

Sustainability

- Environmentally friendly as no additional lubricants needed
- Good coefficient of wear and therefore a long service life
- igus® supports the circular economy of plastics and is investing in chemical recycling. Learn more about this topic at: igus.eu/sustainability

General properties

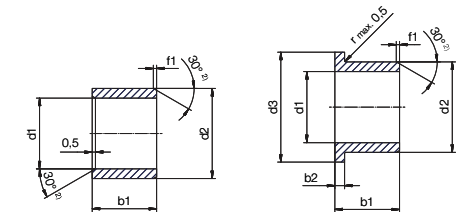
Density	1.55g/cm³
Colour	black
Max. moisture absorption at +23°C and 50% r.h.	n.s.
Max. total moisture absorption	n.s.
Electrical properties	
Specific contact resistance	10 ³ - 10 ⁶ Ωcm
Surface resistance	10 ³ - 10 ⁹ Ω

Mechanical properties

Shore D hardness	n.s.
Max. recommended surface pressure	n.s.
Thermal properties	
Max. long-term application temperature	+250°C
Max. short-term application temperature	+300°C
Min. application temperature	-100°C

Chamfer in relation to d1

d1 [mm]:	Ø 1-6	Ø 6-12	Ø 12-30	Ø > 30
f1 [mm]:	0.3	0.5	0.8	1.2



Part No.	d1	d1 tolerance*	d2	b1	b2
AX500SM-0608-06	6	+0.020 +0.068	8	6	
AX500SM-0810-10	8	+0.025 +0.083	10	10	
AX500SM-1012-10	10	+0.025 +0.083	12	10	
AX500SM-1214-12	12	+0.032 +0.102	14	12	
AX500SM-1618-15	16	+0.032 +0.102	18	15	
AX500SM-2023-20	20	+0.040 +0.124	23	20	

Part No.	d1	d1 tolerance*	d2	d3	b1	b2
AX500FM-0608-06	6	+0.020 +0.068	8	12	8.0	1.0
AX500FM-0810-10	8	+0.025 +0.083	10	15	9.5	1.0
AX500FM-1012-10	10	+0.025 +0.083	12	18	9.0	1.0
AX500FM-1214-12	12	+0.032 +0.102	14	20	12.0	1.0
AX500FM-1618-17	16	+0.032 +0.102	18	24	17.0	1.0
AX500FM-2023-21	20	+0.040 +0.124	23	30	21.5	1.5

* After press-fit of the bearing in a housing with nominal dimension, the inner diameter of the bearing adjusts itself to a E10 tolerance.