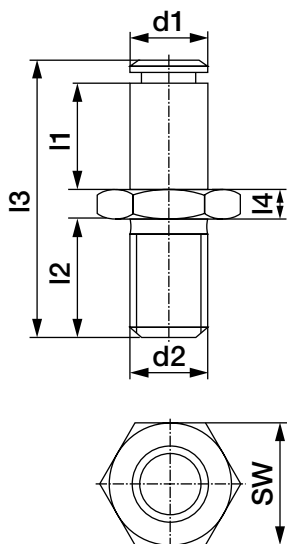


PKRM and PKLM - adapter screws



Order key

Type	Size	Options
P K □ M - 05		
Adapter screw	K series	Thread direction
		Metric
		Thread size M...
		Thread L = Left-hand thread ²¹⁾ R = Right-hand thread

Solid plastic adapter screws with corresponding circlips are used as accessories for dimensional K series rod ends. In contrast to other "black" components of stock igubal® parts, the igubal® adapter screws consist of the **material POM**. This component effectively transforms a standard K series rod end into an angled ball and socket joint.

Material: POM ▶

- Lightweight
- Absolute corrosion resistance
- Can be combined with K series rod end
- Vibration-dampening
- Easy to fit
- Left-hand thread upon request

Technical data and dimensions [mm]

Part No.	Max. static tensile strain		Max. static radial load		Thread	Length adjusting bolt	Thread length	Total length	Nut width	Width across flats	Weight [g]	
	Short-term [lbs]	Long-term [lbs]	Short-term [lbs]	Long-term [lbs]								
PK □ M-05	22.48	11.24	44.96	22.48	5	M5	8.5	11.3	25.0	2.7	SW8	0.7
PK □ M-06	33.72	16.86	56.20	28.10	6	M6	9.5	12.8	28.0	3.2	SW10	1.2
PK □ M-08	56.20	28.10	89.92	44.96	8	M8	12.5	12.5	32.0	4.0	SW13	2.6
PK □ M-10	112.40	56.20	134.88	67.44	10	M10	14.5	14.5	37.5	5.0	SW16	4.0
PK □ M-12	157.36	78.68	202.32	101.16	12	M12	16.5	15.5	42.0	6.0	SW18	7.5
PK □ M-14	179.84	89.92	247.28	123.64	14	M14	19.5	15.5	47.0	7.0	SW21	11.4
PK □ M-16	202.32	101.16	314.72	157.36	16	M16	22.0	16.5	52.0	8.0	SW24	16.9
PK □ M-18	179.84	89.92	382.16	191.08	18	M18 x 1.5	24.0	20.5	59.0	9.0	SW27	16.9
PK □ M-20	112.40	56.20	494.56	247.28	20	M20 x 1.5	26.0	25.0	67.0	10.0	SW30	34.4

²¹⁾ Delivery time: 4–6 weeks

Can be combined with:



KBR(L)M



WGR(L)M-CC



WGR(L)M-DE



GRS(L)M-CL



ZCE(L)M-10

WDGM

WDGM-DE