

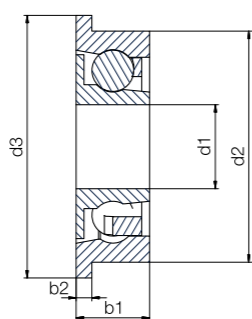
### Single flange with shield



xirodur® B180, PA cage, stainless steel balls



xirodur® S180, PA cage, stainless steel balls



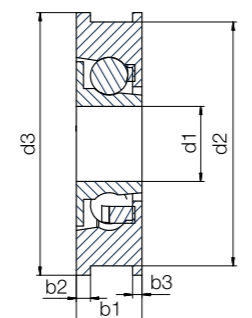
### Double flange with shield



xirodur® B180 races PA cage, stainless steel or glass balls



xirodur® F180 races PA cage, stainless steel balls



### Technical data

Installation size	Double flange	Radial load capacity		Max. speed [rpm]	Weight					
		stat. [N]	dyn. [N]		B180			F180		S180
					PA/ES [g]	PA/GL [g]	B180/ES [g]	PA/ES [g]	PA/ES [g]	
<b>Radial deep groove ball bearing with single flange with shield for guide roller</b>										
626	-	60	62	3,200	-	-	-	-	1.32	
688	-	39	41	3,000	-	-	-	-	0.66	
608	-	80	94	2,400	-	-	-	-	2.00	
608	-	80	94	2,200	5.55	-	-	-	-	
6000	-	110	130	1,900	7.55	-	-	-	-	
6000	-	110	130	1,900	10.06	-	-	-	-	
6001	-	130	147	1,750	7.53	5.09	-	-	-	
6001	-	130	147	1,750	12.02	-	-	-	-	
6002	-	140	150	1,600	11.44	-	-	-	-	
6003	-	160	220	1,550	11.42	-	-	-	-	
6004	-	250	320	1,400	-	-	16.36	-	-	
6004	-	250	320	1,400	-	-	29.60	-	-	
<b>Radial deep groove ball bearing with single or double flange and shields</b>										
608	-	80	94	2,200	5.69	4.47	-	5.49	-	
608	●	80	94	2,200	5.82	5.93	-	5.61	-	



#### Order example:

BB-6000F2830-B180-10-ES = Radial deep groove ball bearing with single flange for system solution BBT (guide roller), race material xirodur® B180 with PA cage and stainless steel balls

## Product range



### Order key with single flange

Type	Material
Ball bearings	
Dimensions according to DIN 625-1	
Single flange	
Outer Ø [mm]	
Race material	
Cage material	
Ball material	



Also available as complete system solution ▶ Page 912



### Order key with double flange

Type	Material	Design
Ball bearings		
Dimensions according to DIN 625-1		
Double flange		
Race material		
Cage material		
Ball material		
Double shield		

#### Flange

F = Single flange  
FF = Double flange  
Race material  
F180 = xirodur® F180  
B180 = xirodur® B180  
S180 = xirodur® S180

#### Cage material

10 = PA  
30 = xirodur® B180  
Ball material  
ES = Stainless steel  
GL = Glass  
Shield  
C = With shield  
CC = Double shield

### Dimensions [mm]

Inner Ø	Outer Ø	Width	Cage/ball material combination				Part No.			
			B180		F180	S180				
			PA/ES	PA/GL	B180/ES	PA/ES				
d1	d2	d3	b1	b2	PA/ES	PA/GL	B180/ES	PA/ES	PA/ES	
6.0	19.0	22.0	6.0	1.5	-	-	-	-	●	BB-626F-S180-10-ES-C
8.0	16.0	18.0	5.0	1.0	-	-	-	-	●	BB-688F-S180-10-ES-C
8.0	22.0	25.0	7.0	1.5	-	-	-	-	●	BB-608F-S180-10-ES-C
8.0	28.0	30.0	7.0	2.0	●	-	-	-	-	BB-608F2830-B180-10-ES
10.0	28.0	30.0	9.0	2.0	●	-	-	-	-	BB-6000F2830-B180-10-ES
10.0	35.0	38.0	9.0	2.0	●	-	-	-	-	BB-6000F3538-B180-10-ES
12.0	28.0	30.0	9.0	2.0	●	-	-	-	-	BB-6001F2830-B180-10-ES
12.0	35.0	38.0	9.0	2.0	●	-	-	-	-	BB-6001F3538-B180-10-ES
15.0	35.0	38.0	9.0	2.0	●	-	-	-	-	BB-6002F3538-B180-10-ES
17.0	35.0	38.0	10.0	2.0	●	-	-	-	-	BB-6003F3538-B180-10-ES
20.0	46.0	50.0	12.0	2.0	-	-	●	-	-	BB-6004F4650G-B180-30-ES
20.0	56.0	60.0	12.0	2.0	-	-	●	-	-	BB-6004F5660G-B180-30-ES
8.0	26.0	28.0	8.5	1.5	●	●	-	●	-	BB-608F-□-10-□-CC
8.0	26.0	28.0	7.0	1.5/1.0 (b3)	●	●	-	●	-	BB-608FF-□-10-□-CC



Available from stock