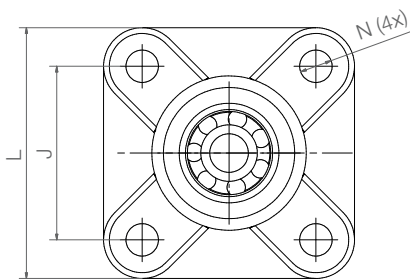
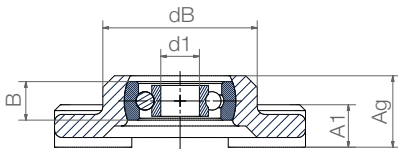




igumid G housing,
PA cage,
stainless steel balls or
glass balls

- Compensation of misalignment errors



Order key

Type

Material

EFSM-BB1-P 08-B180-ES

4-hole fixed flange ball bearings

Ball bearing, single row

Pivoting version

Inner Ø

Race material

Ball material

Race material

B180 = xirodur® B180

Options:

Ball material

ES = Stainless steel

GL = Glass

Technical data

Type	Radial load capacity		Max. speed [rpm]	Weight	
	stat. [N]	dyn. [N]		B180/ES [g]	B180/GL [g]
EFSM-P08	80	94	2,200	25.2	24.0
EFSM-P10	110	130	1,900	48.8	46.2
EFSM-P12	130	147	1,750	80.0	77.7

Dimensions [mm]

Inner Ø d1	dB d2	L	J	A1	Ag	B	N	Max. pivot angle	Part No.
8	32.5	52	36	9	15.5	8	6.4	±20°	EFSM-BB1-P08-B180- <input type="text"/>
10	40.0	65	45	11	18.8	10	8.4	±20°	EFSM-BB1-P10-B180- <input type="text"/>
12	48.0	74	52	14	23.5	12	8.4	±20°	EFSM-BB1-P12-B180- <input type="text"/>



Order example:

EFSM-BB1-P08-B180-ES = 4-hole fixed flange ball bearing with race material xirodur® B180 and stainless steel balls



Available
from stock