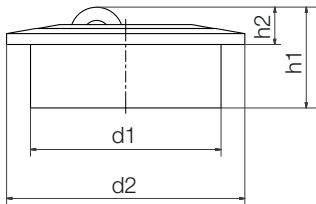




For high loads (HH)



With soft roller made from xirodur® D180 (HS)



BB-515A-B180-HH/-HS

BB-522A-B180-HH/-HS



Order key

Type

Material

BB-522A-B180-HS

Ball bearings

Type

Axial ball transfer unit

Housing material

Ball transfer unit

Options

Ball transfer unit

HH (Hard roller) =

xirodur® B180

HS (Soft roller) =

xirodur® D180

Technical data and dimensions [mm]

Installation size	Max. stat. load capacity axial [N]	Inner Ø		Height		Weight		Part No.
		d1	d2	h1	h2	HS	HH	
						[g]	[g]	
515A	150	24.0	31.0	14.3	5.3	9.96	9.99	BB-515A-B180- <input type="text"/>
522A	300	36.0	45.0	19.2	7.05	24.69	24.71	BB-522A-B180- <input type="text"/>



Order example:

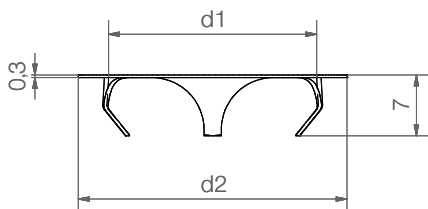
BB-515A-B180-HS = Axial polymer ball transfer unit with housing material xirodur® B180 and soft roller made from xirodur® D180



Available

from stock

Accessories: Clamping rings for xiros® polymer ball transfer units



xiros® clamping rings made of stainless steel offer the possibility to install xiros® polymer ball transfer units in another orientation than the standard horizontal position. Easy assembly and disassembly.

Dimensions [mm]

For ball transfer unit	d1	d2	Housing hole	Weight [g]	Part No.
BB-515-B180-POM/BB-515A-B180- <input type="text"/>	24	31	25H7	0.91	BB-515-CR
BB-522-B180-POM/BB-522A-B180- <input type="text"/>	36	41	37H7	1.61	BB-522-CR



Available

from stock