

xiros® pillow block ball bearing | Product range

FDA-compliant, fixed version – "like for like" replacement possible

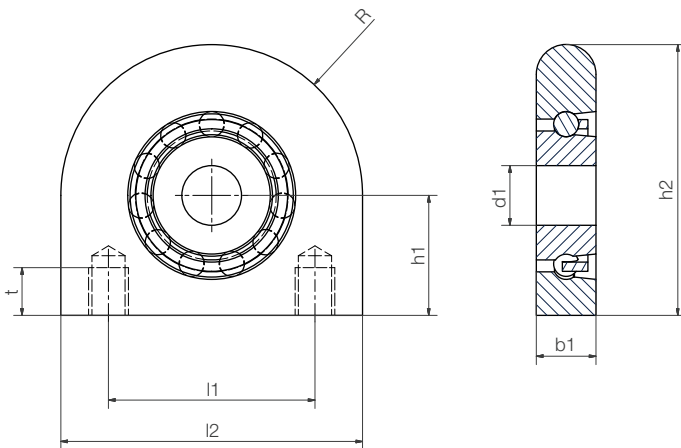


Type	Material
------	----------

ESTM-BB1-F25-B180-ES-SL

Pillow block bearing	Ball bearing, single row	Fixed version	Inner Ø	Race/cage material	Ball material	Slim Line
----------------------	--------------------------	---------------	---------	--------------------	---------------	-----------

- FDA-compliant components
- Can withstand loads of up to approximately 50kg (depending on installation size)



Race/cage material
B180 = xirodur® B180
Ball material
ES = Stainless steel

Technical data

Type	Load capacity, radial		Max. speed [rpm]	Weight ES [g]
	stat. [N]	dyn. [N]		
ESTM-F15	270	350	1,250	86
ESTM-F17	280	360	1,200	85
ESTM-F20	290	370	1,150	83
ESTM-F25	480	520	850	119
ESTM-F30	500	550	840	163

Technical data

d1	b1	h1	h2	l1	l2	R	Thread	t	Part No.
15	15	30.2	68.2	52	76	38	M10	12	ESTM-BB1-F15-B180-ES-SL
17	15	30.2	68.2	52	76	38	M10	12	ESTM-BB1-F17-B180-ES-SL
20	15	30.2	68.2	52	76	38	M10	12	ESTM-BB1-F20-B180-ES-SL
25	17	36.5	78.5	56	84	42	M10	15	ESTM-BB1-F25-B180-ES-SL
30	19	42.9	89.9	66	94	47	M14	18	ESTM-BB1-F30-B180-ES-SL

