

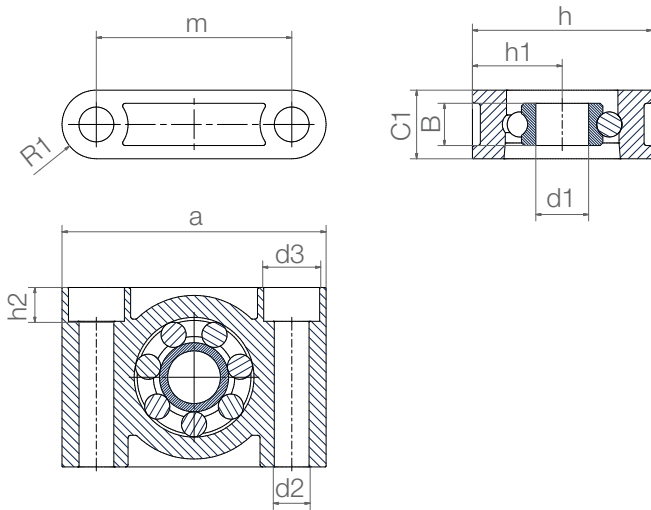
Fixed version



igumid G housing,
PA cage, stainless
steel balls

igumid G housing,
PA cage,
glass balls

- Assembly-friendly



Order key

Type	Material
------	----------

ESTM-BB1-F06-B180-ES

Pillow block bearing	Ball bearing, single row	Fixed version	Inner Ø	Race material	Ball material
----------------------	--------------------------	---------------	---------	---------------	---------------

Race material

B180 = xirodur® B180

Options:

Ball material

ES = Stainless steel

GL = Glass

Technical data

Type	Radial load capacity		Max. speed [rpm]	Weight	
	stat. [N]	dyn. [N]		B180/ES [g]	B180/GL [g]
ESTM-F06	41	43	2,600	7.7	6.7
ESTM-F10	110	130	1,900	20.2	18.2
ESTM-F20	250	320	1,150	54.1	47.7

Dimensions [mm]

Inner Ø d1	Hole Ø d2	d3	h	h1	h2	a	m	C1	B	R1	Part No.
6	5.5	-	22	11	-	36	26	10	6	5.0	ESTM-BB1-F06-B180- <input type="text"/>
10	6.6	10.6	34	17	6.6	50	37	13	8	6.5	ESTM-BB1-F10-B180- <input type="text"/>
20	9.0	14.0	48	24	8.6	72	54	18	12	9.0	ESTM-BB1-F20-B180- <input type="text"/>



Order example:

ESTM-BB1-F06-B180-ES = Pillow block bearing, fixed version, made from xirodur® B180 with stainless steel balls



Available
from stock