

Races made from xirodur® B180



xirodur® B180 cage,
stainless steel balls
Type 6000PP3



xirodur® B180 cage,
stainless steel balls
Type 608P6

- One-piece design
- Replaces several components



Order key

Type	Material	Design
------	----------	--------

BB-608 P6-B180-30-ES-C

Ball bearings	Dimensions according to DIN 625-1	Profile P6	Race material	Cage material	Ball material	With shield
---------------	-----------------------------------	------------	---------------	---------------	---------------	-------------

Cage material

30 = xirodur® B180

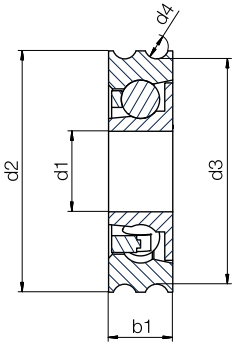
Ball material

ES = Stainless steel

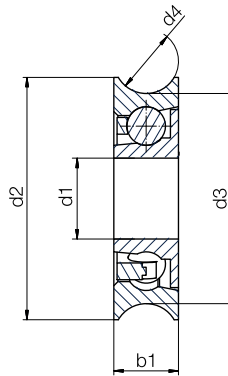
Shield

C = Shield on one side

Example "Profile PP3"



Example "Profile P8"



Technical data

Installation size	Radial load capacity	Max. speed	Weight B180/ES [g]
	stat. [N]	[rpm]	
608P6	80	2,200	3.96
608P8	140	1,800	23.37
6000P8	110	2,200	7.14
6000PP3	110	2,200	7.86
6201P9	160	1,600	27.05

Dimensions [mm]

Inner Ø	Outer Ø	Base Ø	Groove Ø	Width	Part No.
d1	d2	d3	d4	b1	
8	24	20.5	6	7	BB-608P6-B180-30-ES-C
8	48	32	8	14	BB-608P8-B180-30-ES
10	30	26	8	8	BB-6000P8-B180-30-ES-C
10	30	28	3	8	BB-6000PP3-B180-30-ES-C
12	60	43.5	9	12	BB-6201P9-B180-30-ES



Order example:

BB-608P6-B180-30-ES = Radial deep groove ball bearing, profile P8 with race material xirodur® B180, xirodur® B180 cage and stainless steel balls



Available
from stock