

Modular gearbox system

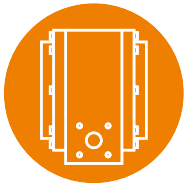
Worm gears

Planetary gearbox

Cantilever axis

Strain wave gear





Lateral view



Gearbox technology



Order key

Type

Options

RL-D-20-101-38-01033

roboLink®	Direct drive	Installation size	Design	Transmission ratio	Version
-----------	--------------	-------------------	--------	--------------------	---------

● Available with motor or hand wheel

Technical data

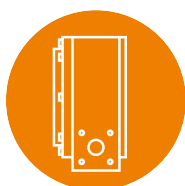
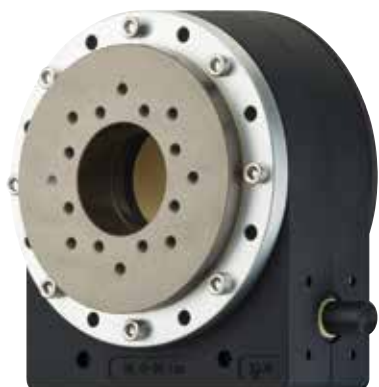
Part No.	Size (H x W x D)	Shaft Ø	Trans- mission	Axis distance	Backlash	Breakaway torque	Max. axial dyn. load on output
	[mm]	[mm]	[mm/rev]	[mm]	[°]	[cNm]	[N]
RL-D-20-101-38-01033	90 x 80 x 67	8	1:38	31	<0.5°	< 5	> 500
RL-D-20-101-70-01033	90 x 80 x 67	8	1:70	31	<0.5°	< 5	> 500
RL-D-30-101-5-01033	110 x 100 x 94	10	1:5	40	<0.5°	< 7	> 700
RL-D-30-101-50-01033	110 x 100 x 94	10	1:50	40	<0.5°	< 7	> 700
RL-D-30-101-70-01033	110 x 100 x 94	10	1:70	40	<0.5°	< 7	> 700
RL-D-50-101-48-01033	170 x 150 x 103	15	1:48	63	<0.5°	< 10	> 1,200
RL-D-50-101-70-01033	170 x 150 x 103	15	1:70	63	<0.5°	< 10	> 1,200

Part No.	Speed at max. load	Weight	Efficiency	Breaking moment (static)	Max. output dynamic torque 12rpm	
					Periodic use (<30%)	Continuous use
	[rpm]	[g]		[Nm]	[Nm]	[Nm]
RL-D-20-101-38-01033	20	610	0.45	30	7.5	5
RL-D-20-101-70-01033	20	610	0.35	20	3.8	2.5 (9rpm)
RL-D-30-101-5-01033	12	1,180	0.65	40	7.5	5
RL-D-30-101-50-01033	12	1,180	0.40	60	15.0	10
RL-D-30-101-70-01033	12	1,180	0.30	30	11.3	7.5 (6rpm)
RL-D-50-101-48-01033	8	3,050	0.40	180	37.5	25
RL-D-50-101-70-01033	8	3,050	0.30	140	30.0	20



Delivery time
2-3 days

Worm gear with one PRT slewing rings, with plain bearings



Lateral view



Gearbox technology



Order key

Type Options

RL-D-20-102-38-01035

robolink®	Direct drive	Installation size	Design	Transmission ratio	Version
-----------	--------------	-------------------	--------	--------------------	---------

● Available with motor or hand wheel

Technical data

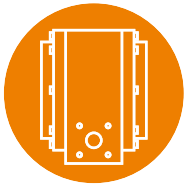
Part No.	Size (H x W x D)	Shaft Ø	Trans- mission	Axis distance	Backlash	Breakaway torque	Max. axial dyn. load on output
	[mm]	[mm]	[mm/rev]	[mm]	[°]	[cNm]	[N]
RL-D-20-102-38-01035	90 x 80 x 67	8	1:38	31	<0.5°	< 5	> 500
RL-D-20-102-70-01035	90 x 80 x 67	8	1:70	31	<0.5°	< 5	> 500
RL-D-30-102-5-01035	110 x 100 x 94	10	1:5	40	<0.5°	< 7	> 700
RL-D-30-102-50-01035	110 x 100 x 94	10	1:50	40	<0.5°	< 7	> 700
RL-D-30-102-70-01035	110 x 100 x 94	10	1:70	40	<0.5°	< 7	> 700
RL-D-50-102-48-01035	170 x 150 x 103	15	1:48	63	<0.5°	< 10	> 1,200
RL-D-50-102-70-01035	170 x 150 x 103	15	1:70	63	<0.5°	< 10	> 1,200

Part No.	Speed at max. load	Weight	Efficiency	Breaking moment (static)	Max. output dynamic torque 12rpm	
					Periodic use (<30%)	Continuous use
	[rpm]	[g]		[Nm]	[Nm]	[Nm]
RL-D-20-102-38-01035	20	470	0.45	30	7.5	5
RL-D-20-102-70-01035	20	470	0.35	20	3.8	2.5 (9rpm)
RL-D-30-102-5-01035	12	890	0.65	40	7.5	5
RL-D-30-102-50-01035	12	890	0.40	60	15.0	10
RL-D-30-102-70-01035	12	890	0.30	30	11.3	7.5 (6rpm)
RL-D-50-102-48-01035	8	2,300	0.40	180	37.5	25
RL-D-50-102-70-01035	8	2,300	0.30	140	30.0	20



Delivery time
2-3 days

Worm gear, with ball bearings



Lateral view



Gearbox technology



Order key

Type Options

RL-D-20-105-38-010BB

robolink®	Direct drive	Installation size	Design	Transmission ratio	Version
-----------	--------------	-------------------	--------	--------------------	---------

● Available with motor or hand wheel

Technical data

Part No.	Size (H x W x D)	Shaft Ø	Trans- mission	Axis distance	Backlash	Breakaway torque	Max. axial dyn. load on output
	[mm]	[mm]	[mm/rev]	[mm]	[°]	[cNm]	[N]
RL-D-20-105-38-010BB	90 x 80 x 67	8	1:38	31	<0.5°	< 5	> 250
RL-D-20-105-70-010BB	90 x 80 x 67	8	1:70	31	<0.5°	< 5	> 250
RL-D-30-105-5-010BB	110 x 100 x 94	10	1:5	40	<0.5°	< 7	> 450
RL-D-30-105-50-010BB	110 x 100 x 94	10	1:50	40	<0.5°	< 7	> 450
RL-D-30-105-70-010BB	110 x 100 x 94	10	1:70	40	<0.5°	< 7	> 450
RL-D-50-105-48-010BB	170 x 150 x 103	15	1:48	63	<0.5°	< 10	> 1,000
RL-D-50-105-70-010BB	170 x 150 x 103	15	1:70	63	<0.5°	< 10	> 1,000

Part No.	Speed at max. load	Weight	Efficiency	Breaking moment (static)	Max. output dynamic torque 12rpm	
					Periodic use (<30%)	Continuous use
	[rpm]	[g]		[Nm]	[Nm]	[Nm]
RL-D-20-105-38-010BB	20	320	0.45	30	7.5	5
RL-D-20-105-70-010BB	20	320	0.35	20	3.8	2.5 (9rpm)
RL-D-30-105-5-010BB	12	620	0.65	40	7.5	5
RL-D-30-105-50-010BB	12	620	0.40	60	15.0	10
RL-D-30-105-70-010BB	12	620	0.30	30	11.3	7.5 (6rpm)
RL-D-50-105-48-010BB	8	2,730	0.40	180	37.5	25
RL-D-50-105-70-010BB	8	2,730	0.30	140	30.0	20



Delivery time
2-3 days

Worm gears, with ball bearings

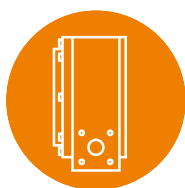


Order key

Type Options

RL-D-20-106-38-010B5

robolink®	Direct drive	Installation size	Design	Transmission ratio	Version
-----------	--------------	-------------------	--------	--------------------	---------



Lateral view



Gearbox technology

● Available with motor or hand wheel

Technical data

Part No.	Size (H x W x D)	Shaft Ø	Trans- mission	Axis distance	Backlash	Breakaway torque	Max. axial dyn. load on output
	[mm]	[mm]	[mm/rev]	[mm]	[°]	[cNm]	[N]
RL-D-20-106-38-010B5	90 x 80 x 67	8	1:38	31	<0.5°	< 5	> 250
RL-D-20-106-70-010B5	90 x 80 x 67	8	1:70	31	<0.5°	< 5	> 250
RL-D-30-106-5-010B5	110 x 100 x 94	10	1:5	40	<0.5°	< 7	> 450
RL-D-30-106-50-010B5	110 x 100 x 94	10	1:50	40	<0.5°	< 7	> 450
RL-D-30-106-70-010B5	110 x 100 x 94	10	1:70	40	<0.5°	< 7	> 450
RL-D-50-106-48-010B5	170 x 150 x 103	15	1:48	63	<0.5°	< 10	> 1,000
RL-D-50-106-70-010B5	170 x 150 x 103	15	1:70	63	<0.5°	< 10	> 1,000

Part No.	Speed at max. load	Weight	Efficiency	Breaking moment (static)	Max. output dynamic torque 12rpm	
					Periodic use (<30%)	Continuous use
	[rpm]	[g]		[Nm]	[Nm]	[Nm]
RL-D-20-106-38-010B5	20	280	0.45	30	7.5	5
RL-D-20-106-70-010B5	20	280	0.35	20	3.8	2.5 (9rpm)
RL-D-30-106-5-010B5	12	520	0.65	40	7.5	5
RL-D-30-106-50-010B5	12	520	0.40	60	15.0	10
RL-D-30-106-70-010B5	12	520	0.30	30	11.3	7.5 (6rpm)
RL-D-50-106-48-010B5	8	2,140	0.40	180	37.5	25
RL-D-50-106-70-010B5	8	2,140	0.30	140	30.0	20



Delivery time
2-3 days

roboLink® D | Worm gears | Product range

roboLink® D worm gear with stepper motor



RL-D-20-A0206



RL-D-30-A0207



RL-D-50-A0129

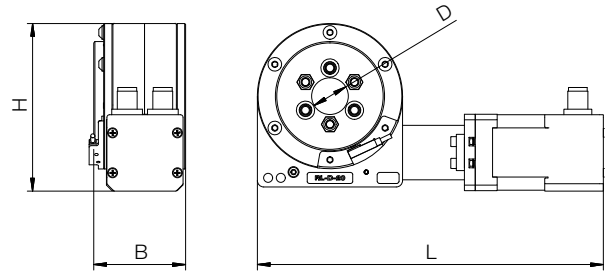


RL-D-30-A0171



Gearbox technology

- Adaptable to various motors, standard option: NEMA17 / 23 / 23XL stepper motor
- INI kit for zero position optionally adaptable
- Motor kits available online



Motor kit

Motor type	Distance over hubs [mm]	Versions
igus® stepper motor		
NEMA17, NEMA23, NEMA23XL	42, 56, 60	-00: with strand wires -01: with stepper motor without encoder -02: with motor encoder -NM: version without motor

Technical data

Joint		Installation size 20		Installation size 30		Installation size 50	
		RL-D-20-101-38-xxxxx		RL-D-30-101-50-xxxxx		RL-D-50-101-48-xxxxx	
Motor		+ NEMA17		+ NEMA17	+ NEMA23	+ NEMA23	+ NEMA23XL
Motor type		Stepper motor					
Weight (with standard joint)	[g]	890	1,140	1,860	2,540	2,970	
Max. radial torque strength (short-term)	[Nm]	5	6	12	21	38	
Max. radial torque strength (long-term)	[Nm]	4	5	8	18	33	
Max. speed (at max. load)	[rpm]	5	4	4	4	4	
Max. axial dynamic load (horizontal installation)	[N]	> 500	> 700	> 700	> 1,200	> 1,200	



robolink® D worm gear with DC motor



RL-D-20-A0202



RL-D-30-A0203



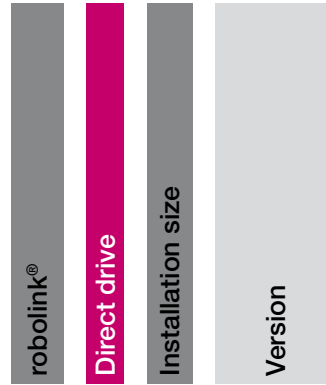
RL-D-50-A0204



Order key

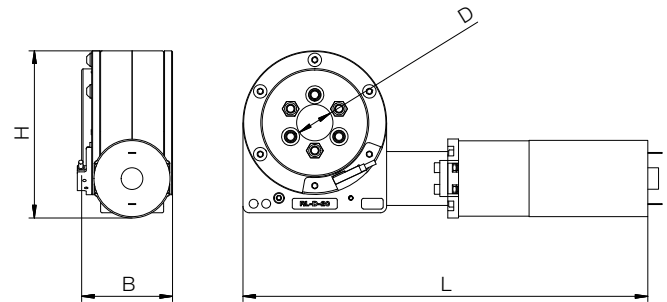
Type Options

RL-D-20-A0202



Gearbox technology

- Assembly of robot joint, motor kit, INI kit
- Optionally with cables ► [Page 674](#) and motor control systems ► [Page 662](#)
- Motor kits available online



Technical data

	Weight	Max. output torque	Max. speed (at max. load)	Service life gearbox
	[kg]	[Nm]	[rpm]	
Installation size 20				
RL-D-20-A0202	1.06	7.0	6	Min. 1,000,000 cycles ¹⁶⁹⁾
Installation size 30				
RL-D-30-A0203	1.50	15.0	3	Min. 1,000,000 cycles ¹⁶⁹⁾
Installation size 50				
RL-D-50-A0204	4.80	37.5	3	Min. 1,000,000 cycles ¹⁶⁹⁾

¹⁶⁹⁾ At a rated torque of 2.5Nm and a rated speed of 30rpm

Dimensions [mm]

Part No.	D	B	L	H
Installation size 20				
RL-D-20-A0202	20	50.5	233.7	90.0
Installation size 30				
RL-D-30-A0203	30	63.5	253.7	110.0
Installation size 50				
RL-D-50-A0204	50	87.5	303.77	170.5



Delivery time
2-3 days





Joint



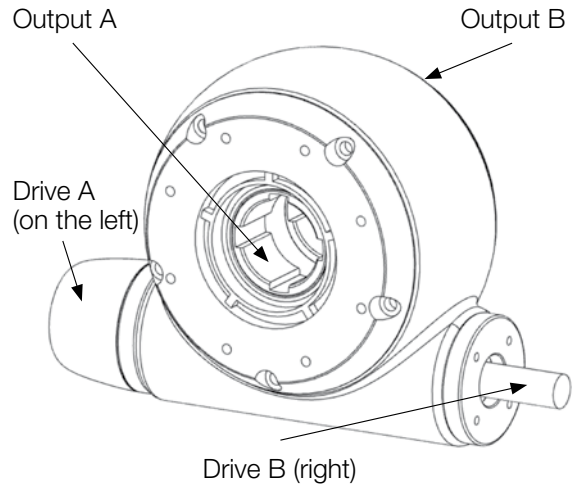
Joint with coupling



Joint with turntable



Joint with turntable on both sides



Gearbox technology

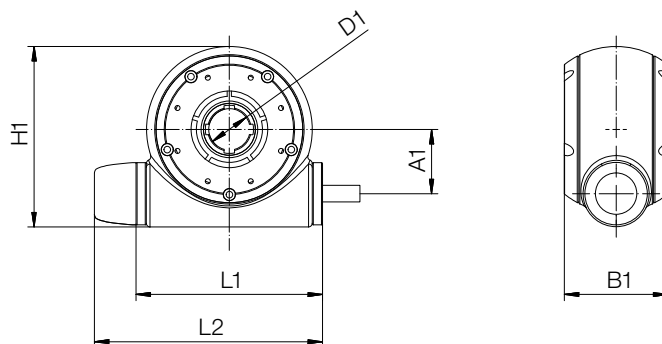
Technical data

Designation	Transmission	Self-locking	Max. speed [rpm]	Max. output torque [Nm]	Breaking moment [Nm]	F stat. axial [N]	Backlash [°]
Joint	4:1	–	160	2.5	20	250	< 0.5
	8:1	–	80	2.5	20	250	< 0.5
	32:1	–	20	2.5	20	250	< 0.5
	64:1	Yes	10	1.5	10	250	< 0.5

Apiro® iDeas

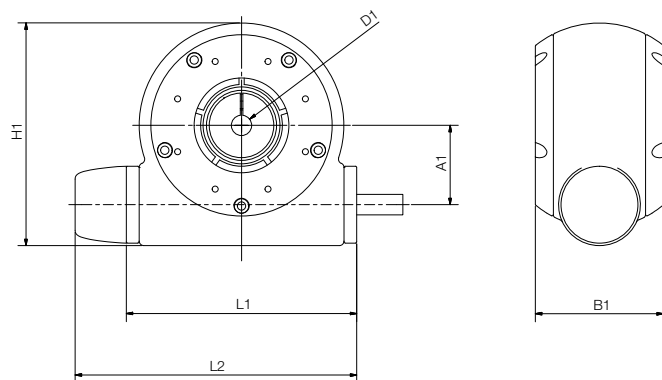


- Simply recreate ideas for automation systems
- With connection to dryspin®
- Select automation solution - download parts lists and CAD files
- ▶ igus.eu/apiro-ideas



Technical data and dimensions [mm] - standard version

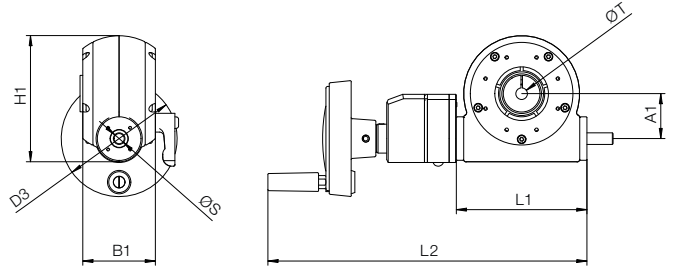
Part No.	Transmission	L1	L2	H1	B1	D1	D2 øT	A1	Weight [g]
RL-A10.0105	4:1	90	110	87	50	8	20	31	230
RL-A10.0104	8:1	90	110	87	50	8	20	31	230
RL-A10.0106	32:1	90	110	87	50	8	20	31	230
RL-A10.0107	64:1	90	110	87	50	8	20	31	230



Technical data and dimensions [mm] - with coupling

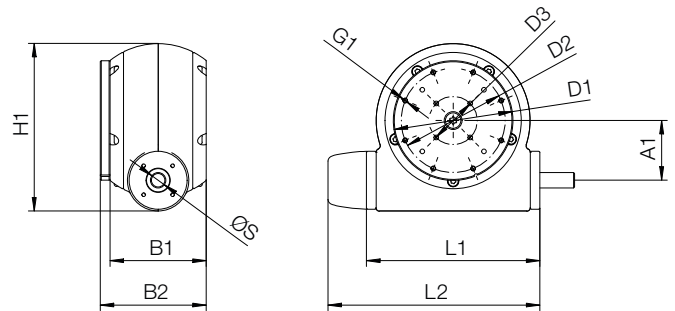
Part No.	Transmission	L1	L2	H1	B1	D1	D2 øT	A1	Weight [g]
RL-A10.0117	4:1	90	110	87	50	8	8	31	240
RL-A10.0200	8:1	90	110	87	50	8	8	31	240
RL-A10.0118	32:1	90	110	87	50	8	8	31	240
RL-A10.0119	64:1	90	110	87	50	8	8	31	240
RL-A10.0220	4:1	90	110	87	50	8	12	31	240
RL-A10.0207	8:1	90	110	87	50	8	12	31	240
RL-A10.0204	32:1	90	110	87	50	8	12	31	240
RL-A10.0203	64:1	90	110	87	50	8	12	31	240

Apiro® worm gear joints



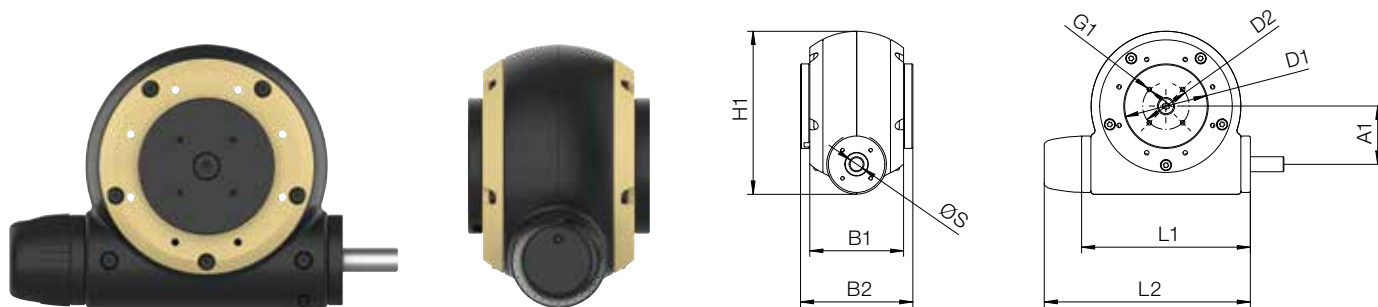
Technical data and dimensions [mm] - with coupling, manual clamp, position indicator and hand wheel

Part No.	Transmission	L1	L2	H1	B1	D1 ØS	D2 ØT	D3	A1	Weight [g]
RL-A10.0129 New	4:1	90	220	87	50	8	8	80	31	495
RL-A10.0208 New	8:1	90	220	87	50	8	8	80	31	495
RL-A10.0130 New	32:1	90	220	87	50	8	8	80	31	495
RL-A10.0131 New	64:1	90	220	87	50	8	8	80	31	495
RL-A10.0221 New	4:1	90	220	87	50	8	12	80	31	495
RL-A10.0222 New	8:1	90	220	87	50	8	12	80	31	495
RL-A10.0213 New	32:1	90	220	87	50	8	12	80	31	495
RL-A10.0219 New	64:1	90	220	87	50	8	12	80	31	495



Technical data and dimensions [mm] - with turntable

Part No.	Transmission	L1	L2	H1	B1	B2	D1	D2	D3	S Ø	A1	G1	Weight [g]
RL-A10.0138 New	4:1	90	110	87	50	55	62	54	25	8	31	M3x0.5	250
RL-A10.0170 New	8:1	90	110	87	50	55	62	54	25	8	31	M3x0.5	250
RL-A10.0114 New	32:1	90	110	87	50	55	62	54	25	8	31	M3x0.5	250
RL-A10.0139 New	64:1	90	110	87	50	55	62	54	25	8	31	M3x0.5	250



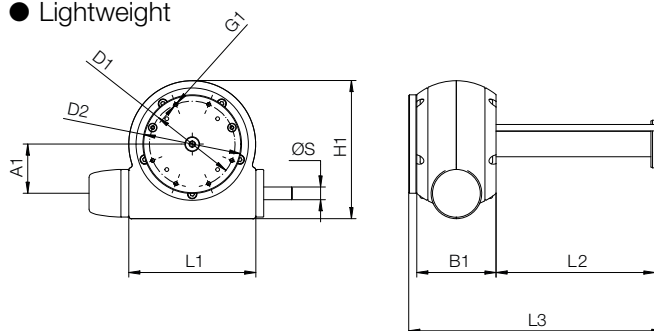
Technical data and dimensions [mm] - with turntable on both sides

Part No.	Transmission	L1	L2	H1	B1	B2	D1	D2	S Ø	A1	G1	Weight [g]
RL-A10.0209 New	4:1	90	110	87	50	55	45	25	8	31	M3x0.5	280
RL-A10.0206 New	8:1	90	110	87	50	55	45	25	8	31	M3x0.5	280
RL-A10.0210 New	32:1	90	110	87	50	55	45	25	8	31	M3x0.5	280
RL-A10.0211 New	64:1	90	110	87	50	55	45	25	8	31	M3x0.5	280

Apiro® lift/push drive



- Dry operation thanks to tribologically optimised plastics
- Adjustment can be motorised or manual
- Suitable for splash water applications
- Lightweight



Technical data and dimensions [mm]

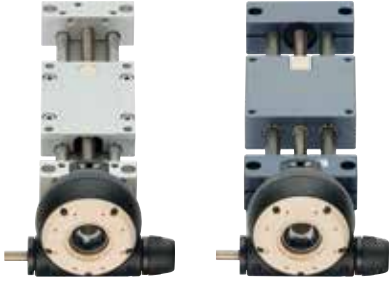
Part No.	load [N]	Feed rate [mm/rev]	Stroke [mm]	Speed [mm/s]	L1	L2	H1	B1	D1	D2	S Ø	A1	G1
RL-A18.0101.□ New	250	0.5	10-250	5	80	10-250	87	50	27	62	8	31	M3

Stroke freely configurable from 10-250mm

Connection to linear units



Apiro® worm gear with adapter plate



Direct connection to drylin® drive technology

An adapter allows Apiro® gearboxes can be mounted directly on the output journal of drylin® SHT and SLW linear modules. Thanks to this structure, drylin® systems can be synchronized and several Apiro® gearboxes connected in series.

The right adapter plate is also required for connecting a linear unit.

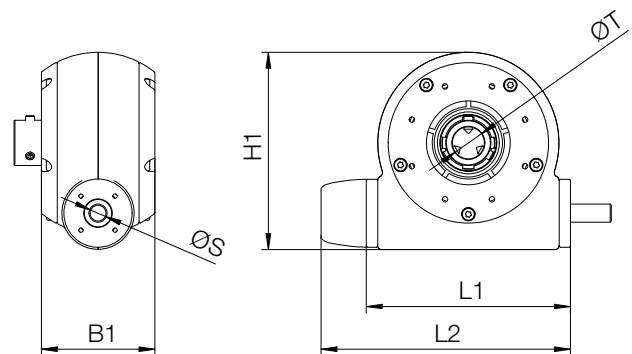
- Combination and synchronisation with the drylin® drive technology modular system
- Set-up instructions including parts list

An Apiro® worm gear with connection to drylin® is also needed.

► www.igus.sk/apiro-format-adjustment

Technical data - adapter plate

Part No.	Available options
RL-A54.0114 New	SHT-12 / SLW-10xx
RL-A54.0113 New	SLW-1660
RL-A54.0115 New	SHT-20
RL-A54.0117 New	SHT-BB-20 / SLW-BB-2080
RL-A54.0116 New	SHT-30
RL-A54.0118 New	SHT-BB-30 / SLW-BB-25120
RL-A54.0121 New	SLW-10xx (zinc shaft end support)



Technical data and dimensions [mm] - with connection to drylin®

Part No.	Transmission	L1	L2	H1	B1	D1	D2 ØT	A1	Weight [g]
RL-A10.0182 New	4:1	90	110	87	50	8	14	31	240
RL-A10.0183 New	8:1	90	110	87	50	8	14	31	240
RL-A10.0184 New	32:1	90	110	87	50	8	14	31	240
RL-A10.0185 New	64:1	90	110	87	50	8	14	31	240

Also available with a hand wheel and other accessories ► www.igus.sk/apiro-drylin

Connection to linear units



Direct connection to dryspin® lead screw technology
Lead screws with diameters of 10, 12, and 16mm can be connected directly to Apiro® gearboxes with the output journal. Depending on the thread pitch, the lead screw can be moved.

You will find the igus® lead screw shop online:

► igus.eu/apiro-format-adjustment

Technical data

Part No.	Transmission	Available options
RL-A10.0190 New	4:1	TR16x2
RL-A10.0191 New	32:1	TR16x2
RL-A10.0192 New	64:1	TR16x2
RL-A10.0193 New	4:1	DS10x25
RL-A10.0194 New	32:1	DS10x25
RL-A10.0195 New	64:1	DS10x25
RL-A10.0196 New	4:1	DS12x5
RL-A10.0197 New	32:1	DS12x5
RL-A10.0198 New	64:1	DS12x5



Synchronising drylin® linear axes with Apiro® worm gears allows automated format adjustment for the packaging and beverage industry

Rack gears



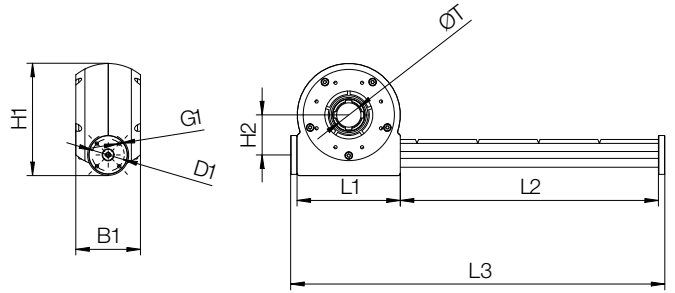
RL-A14.0107



RL-A14.0109

The rack gears allow different strokes in the application and include rack and pinion elements. They are configurable in different lengths - for pusher applications, for example. The version with coupling makes it easy to synchronise several rack and pinion gears.

- Motor drive or manual drive
- Modules can be connected in series or in parallel
- INI kit available for all options
- Application temperature: +5°C to +50°C



Order example

RL-A14.0107.3

(rack gear, 60mm stroke)

Technical data

Part No.	Feed rate per rotation [mm]	Backlash [°]	Max. load [N]	Weight [g]
RL-A14.0107.□ New	125.66	< 0.5	25	ab 330
RL-A14.0109.□ New	125.66	< 0.5	25	ab 330
RL-A14.0114.□ New	125.66	< 0.5	25	ab 330

Dimensions [mm]

Part No.	T ∅	L1	H1	H2	B1	D1	G1
RL-A14.0107.□ New	20	80	87	31	50	25	M3
RL-A14.0109.□ New	8	80	87	31	50	25	M3
RL-A14.0114.□ New	12	80	87	31	50	25	M3

Part No. add-on □	L2 Stroke	L3 Total system length
... 3	60	150
... 4	110	200
... 5	155	245
... 6	200	290
... 7	250	340
... 8	295	385
... 9	345	435
... 10	390	480
... 11	440	530
... 12	485	575
... 13	530	620

Part No. add-on □	L2 Stroke	L3 Total system length
... 14	580	670
... 15	625	715
... 16	675	765
... 17	720	810
... 18	770	860
... 19	815	905
... 20	860	950
... 21	910	1000
... 22	955	1045
... 23	1005	1095
... 24	1,050	1140

Rack gears with integrated planetary gearbox



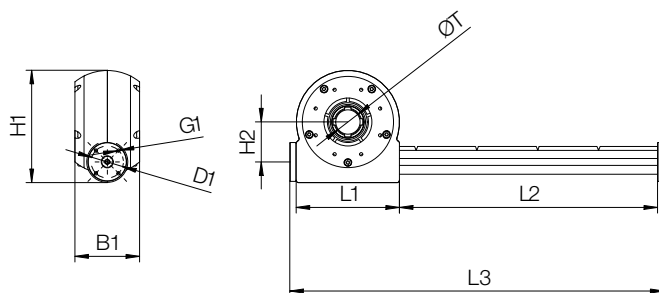
RL-A16.0102.XX



Gearbox technology

The Apiro® rack and pinion gear with integrated planetary gearbox allows direct connection of NEMA stepper motors or DC motors, creating a very compact unit.

- Lubrication and maintenance-free
- Greater forces possible with the same installation space
- High efficiency
- High positioning accuracy
- Transmission: 4:1



Technical data

Part No.	Profile diameter [mm]	Axis distance [mm]	Backlash [°]	Max. load [N]	Feed rate per rotation [mm]	Weight [g]
RL-A16.0102.□ New	20	31	< 0.5	25	31.42	ab 280

Stroke lengths according to the additional table on the left

Dimensions [mm]

Part No.	L1	L2	L3	H1	H2	B1	D1	G1	T ∅
RL-A16.0102.□ New	80	60 - 1,050	150 - 1,140	87	31	50	25	M3	20



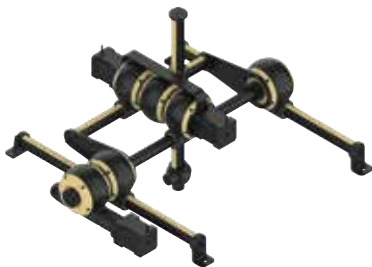
One robot gear set for eight systems

Apero® robot modular gearbox systems now available as a starter kit. Assemble your own robot - includes instructions.

- Lightweight due to igus® high-performance polymers
- Infinite combination options
- Individual kinematics can be implemented
- Easy assembly with the help of instructions
- Motor and magnet picker included in delivery, control system available upon request



Part No. RL-A9.0200



Apero® room linear robot



Apero® flat linear robot



Apero® mini articulated robot



Apero® pusher



Apero® 2-axis picker



Apero® 3-axis picker



Apero® 360° picker



Apero® SCARA

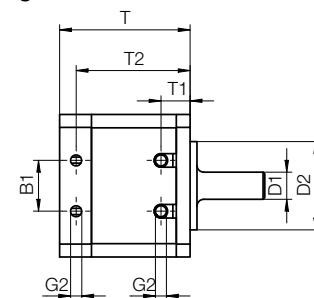
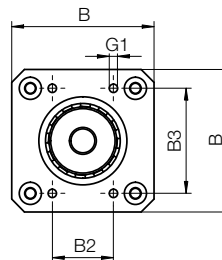
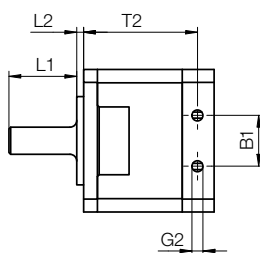
Example image

drygear® strain wave gear output shaft



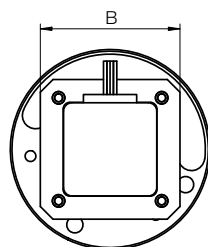
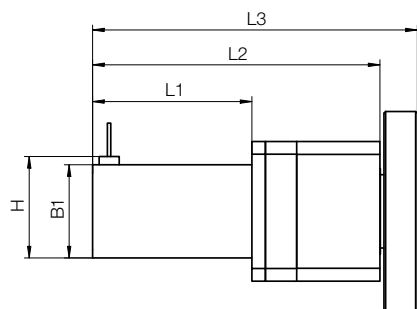
Gearbox technology

- Lightweight due to igus® high-performance polymers
- Extremely compact for integration into robotics
- All-round improved performance and running performance
- A direct output shaft enables the connection of various couplings such as shaft couplings, elastomer couplings, metal ball couplings



Dimensions [mm]

Part No.	B	B1	B2	B3	D1 ∅	D2 ∅	G1	G2	L1	T	T1	T2
RL-S-17-28-AA-02 New	42	15	18	31	8 h7	26 h7	M3x4	M4x4	20	38.5	8.6	33.6



Part No.	Design	B	B1	L1	L2	L3	H	Weight [g]
RL-S-17-28-AA-N11-00 New	With stranded wire	42.0	28.0	47.5	87.4	98.6	30.5	352
RL-S-17-28-AA-N11-01 New	With connector	42.0	–	67.5	107.4	118.6	41.0	375
RL-S-17-28-AA-N11-02 New	With stranded wire and encoder	42.0	28.0	57.5	97.4	108.6	30.5	361
RL-S-17-28-AA-N17-00 New	With stranded wire	42.0	–	49.0	83.4	94.6	46.0	553
RL-S-17-28-AA-N17-01 New	With connector	42.0	60.0	70.4	104.8	116.0	55.0	602
RL-S-17-28-AA-N17-02 New	With stranded wire and encoder	42.0	60.0	70.4	104.8	116.0	55.0	629
RL-S-17-28-AA-N17-03 New	With connector, encoder and brake	42.0	60.0	106.4	140.8	152.0	55.0	759



Optional couplings:

All drylin® E couplings for Ø8 shaft

Standard motor option:

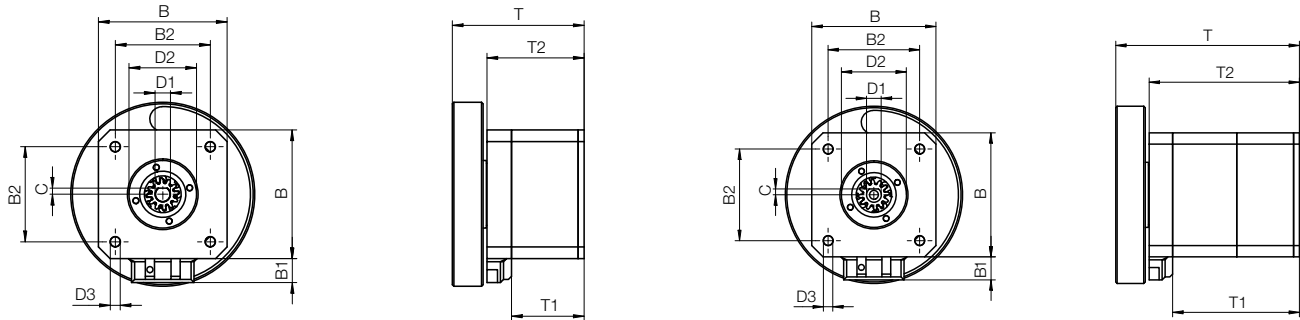
Stepper motor, DC motor, BLDC motor

drygear® planetary gearbox | Product range **New**

drygear® planetary gearbox RL-P



- Tribologically optimised high-performance polymers
- Flexible use of motors from the drylin® E product range
- Without lubrication for the planetary gears in the gearbox
- Lightweight construction (149.1g with a transmission of 4:1)



Gearbox technology

Technical data

Part No.	Number of gearbox stages	Max. drive speed [rpm]	Efficiency [%]	Backlash [°]	Mechanical service life [1/min]	Weight [g]
RL-P-17-4-AA New	1	>700	90	>7	1,000,000 cycles at 1Nm and 25rpm	149.1
RL-P-17-16-AA New	2	>700	80	>7	1,000,000 cycles at 3Nm and 25rpm	191.3

Dimensions [mm]

Part No.	B	B1	B2	D1	D2	D3	C	T	T1	T2
	∅	∅	∅	∅	∅	∅				
RL-P-17-4-AA New	42	7.8	31	5x24	22x2	3.2	2	43.0	23.7	31.7
RL-P-17-16-AA New	42	7.8	31	5x24	22x2	3.2	2	62.2	42.9	50.9



Delivery time
2-3 days