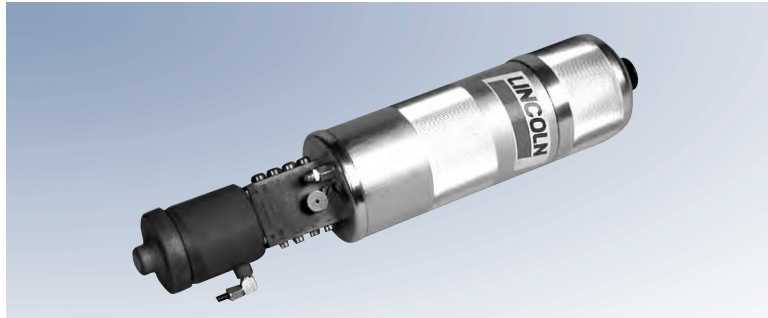


PP, PPO, PPG, PPGO Pumps



PPG15-K

The pump model series PP is for progressive systems. The pump is a pneumatically operated single-stroke pump requiring a 3/2 way air-valve for activating the air cylinder. Depending on the pump version it can be used for oil (PPGO) or grease (PP and PPG)

supply. The version for grease systems is equipped with a spring-loaded follower plate and a control rod for lubricant control. The oil version comes with a clear plastic reservoir to enable visual level control.



PPGO18

Popular Models

Part No.	Description	Reservoir Capacity	Grease or Oil	Number of Outlets	Output per Stroke
604-25105-2	PP15	1.5 liters (91 in ³)	grease	1	2.6 cm ³ (0.158 in ³)
604-25111-3	PPG15	1.5 liters (91 in ³)	grease	8	2.6 cm ³ (0.158 in ³)
604-25129-2	PPG4-K	0.4 liters (24 in ³)	grease	8	0.2 cm ³ per outlet (0.012 in ³)
604-25130-3	PPG15-K	1.5 liters (91 in ³)	grease	8	0.2 cm ³ per outlet (0.012 in ³)
604-27223-1	PPO18	1.8 liters (110 in ³)	oil	1	2.6 cm ³ (0.158 in ³)
604-27213-1	PPGO18	1.8 liters (110 in ³)	oil	8	2.6 cm ³ (0.158 in ³) 0.2 cm ³ per outlet (0.012 in ³)

Technical Data

	PP	PPG	PPO	PPGO
pump pressure ratio	40:1			
air pressure	min. 4 bar (58 psi) / max. 10 bar (145 psi)			
maximum operating pressure	300 bar (4350 psi)	250 bar (3625 psi)	300 bar (4350 psi)	250 bar (3625 psi)
lube outlet	6 mm	for 4 or 6 mm tube*	6 mm	for 4 or 6 mm tube*
air inlet	G 1/8 female (BSPP)			

* see SSV metering device for outlet fittings

Dimensions

Model	Height	Width	Depth
PP 15	550 mm (22 in)	115 mm (4.6 in)	122 mm (4.8 in)
PPG 15	725 mm (29 in) level indicator fully extended	115 mm (4.6 in)	122 mm (4.8 in)
PPG 15-K			
PPO 18	473 mm (16.6 in)	115 mm (4.6 in)	122 mm (4.8 in)
PPGO 18			