

**Product Information**

**Flow Indicator  
 FH...GR**



- No moving parts internally
- Installation location as desired
- For heavily soiled or coloured fluids
- Double-sided large-surface window
- Natural glass

**Characteristics**

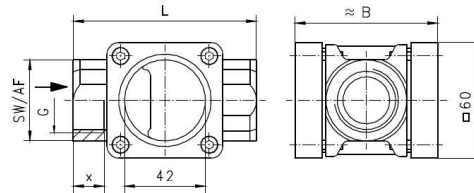
Devices made from solid red bronze, where the medium can be visually examined through the sight glass (fluid level, colour, bubbles,...).

**Technical data**

Nominal width	DN 15..25
Process connection	female thread G 1/2..G 1
Q <sub>max.</sub>	G 1/2 - 25 l/min G 3/4 - 45 l/min G 1 - 65 l/min
Pressure resistance	PN 16 bar
Medium temperature	0..100 °C water -20..+200 °C oils
Ambient temperature	-20..+100 °C
Materials medium-contact	Rg 5, CW614N, soda lime glass, Klingersil C4400
Medium	water, oils
Weight	see table "Dimensions and weights"
Installation location	as desired

**Dimensions and weights**

G	Types	L	B	SW	X	Weight kg
G 1/2	FH-015GR	85	68	38	14	1.20
G 3/4	FH-020GR					1.10
G 1	FH-025GR	95	74	42	16	1.25



**Ordering code**

FH -  1.  2.  3.  
 G  R

<b>1. Nominal width</b>	
015	DN 15 - G 1/2
020	DN 20 - G 3/4
025	DN 25 - G 1
<b>2. Process connection</b>	
G	female thread
<b>3. Connection material</b>	
R	red bronze

... professional Instruments "MADE IN GERMANY"